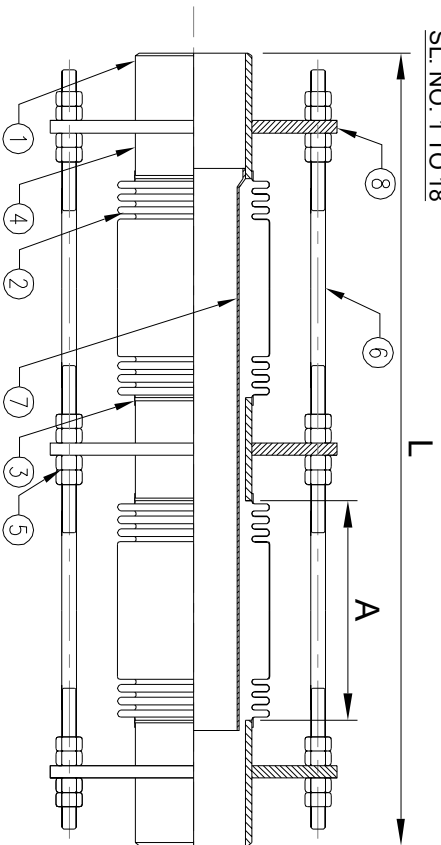
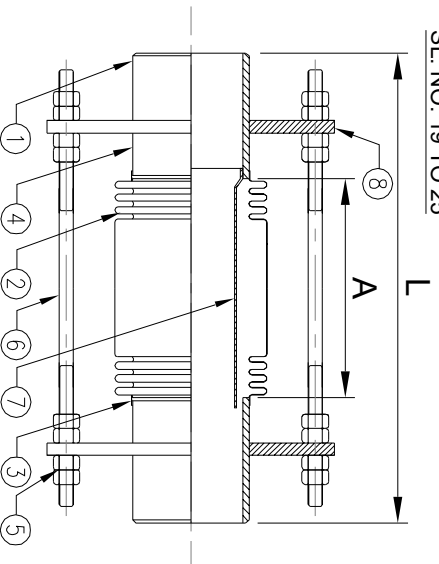


SL. NO. 1 TO 18



SL. NO. 19 TO 25



MODEL - SSEJ-250W-SG
WELDED ENDS : SCHEDULE 40 PIPE
WORKING PRESSURE : 16 / 25 bar
WORKING TEMPERATURE : -50°C to +450°C
AXIAL MOVEMENT : +/- 50mm

WARNING : - Control units must be used to protect this part from excessive movement if piping is not properly anchored.



MODEL - SSEJ-250T-SG
 [TWO BELLOW TYPE]



MODEL - SSEJ-250T-SG
 [SINGLE BELLOW TYPE]
 ABOVE PICTURE IS FOR ILLUSTRATION PURPOSE ONLY

SL. NO.	NOMINAL BORE	TOTAL LENGTH (L)	BELLOWS	
			CORRS	A
1	15	600	27+27	130
2	20	600	25+25	130
3	25	600	25+25	130
4	32	600	20+20	140
5	40	650	17+17	140
6	50	650	16+16	140
7	65	700	14+14	140
8	80	700	14+14	140
9	100	700	12+12	145
10	125	700	12+12	145
11	150	700	10+10	145
12	200	700	8+8	150
13	250	700	8+8	150
14	300	700	8+8	150
15	350	700	6+6	140
16	400	800	6+6	140
17	450	800	6+6	155
18	500	900	6+6	170
19	600	450	6	200
20	650	550	5	200
21	700	550	4	210
22	750	550	4	210
23	800	550	4	210
24	900	550	4	210
25	1000	550	4	210

CONSTRUCTION

ITEM	PARTS	MATERIAL
1	TUBE ENDS	CARBON STEEL
2	BELLOWS	SUS304
3	SEAL RING	SUS304
4	TUBE	CARBON STEEL
5	NUTS	CARBON STEEL
6	TIE ROD	CARBON STEEL
7	INNER SLEEVE	SUS304
8	TIE-ROD HOLDER	CARBON STEEL

OTHER MATERIALS/FINISH AVAILABLE ON REQUEST

STANDARD FINISH

FLANGES / GUSSETS : GALVANO PAINT

CONTROL ROD : ZINC PLATED & HARDWARE

Kinjoints
 Stainless Steel Expansion Joints