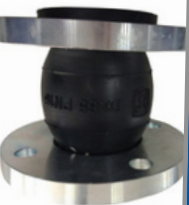




PRODUCT

RANGE

CATALOGUE





STANDARD AHU

- Casing is made of 0.9mm thick plain GI sheet inner & powder coated GI sheet Outer
- Casing Double skin construction with insulation Rockwool / PU Foam / Fiberglass
- Unit frame is made of 2.0mm high strength extruded aluminum pentapost and internal post
- Air Flow Range: 1000 m³/h to 85,000 m³/h
- Fan model are compliance with AMCA 210 & 300 standards
- Manufacturing Standards: ISO 9001 / 14001 / 45001



ECOLOGY UNITS

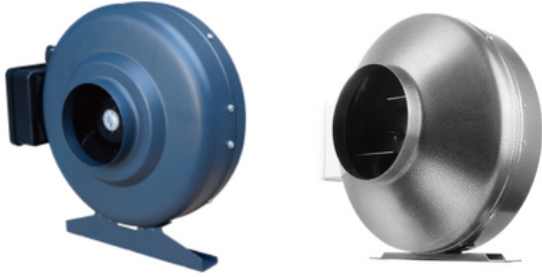
- Construction: Double Skin
- Sheet Material: GI / SS-304 / SS-316 / SS-316L
- Insulation Material: Fire rated Rockwool / PUF
- Access Door: Hinged / Removable
- Airflow Range: 500 – 30,000 CFM
- Fan option: DIDW / SISW (400C/2hr tested)
- Motor Option: IE2 / IE3
- Structure: Extruded Aluminum Profile
- Sheet Thickness: 0.8mm inner & outer (upto 2mm)
- Insulation Thickness: 25mm / 50mm
- Base Frame: 30/50mm high, 2mm GI Const.
- Multi-stage Filtration: Pre(G4) + Bag(F7) + Carbon – Combo varies
- Pressure Measurement: (Optional) DPS / DPT / Pressure gauge
- Motor Protection: Class F (Std.) / Class H (Optional)

FAN COIL UNITS

- Casing: 0.9 mm thick Galvanized Steel.
- Insulation: 10 mm thick irradiated PE/NBR foam on coil section
- Drain Pan: 0.9 mm thick Galvanized powder coated with 5mm PE/NBR insulation
- Coil: 9.52 mm OD, 0.32 mm thick Copper tube & 0.105 mm mild rippled and die formed slit
- Aluminum blue fins with hydrophilic coating
- Fan: High Efficiency GI rolled direct driven Centrifugal forward curved Fan with Steel Wheels.
- Minimize Noise and Vibration.
- Motor: Open shielded foot mounted IP 20 protected motor with class B insulation.
- Filter: 7mm thick aluminum washable type MERV-3



KINAIR IN-LINE DUCT CENTRIFUGAL FAN-SHEET METAL



- All-metal material has strong anti-corrosion ability.
- Fan body is made of Eco-friendly material with compact design.
- Backward inclined type of Impeller design, Optimization of air duct to ensure continuous and high efficient air supply, air volume supply is adequate.
- The fan speed can be controlled by voltage or frequency variation regulators.
- IP44 protection and F-class insulation external rotor motor, which is more durable and ball bearing with long working life over 50000 hours.

KINAIR IN-LINE DUCT CENTRIFUGAL FAN-PAINTED PLASTIC



- All plastic material
- Fan body is made of Eco-friendly material with compact design.
- Backward inclined type of Impeller design, Optimization of air duct to ensure continuous and high efficient air supply, air volume supply is adequate.
- The fan speed can be controlled by voltage or frequency variation regulators.
- IP44 protection and F-class insulation external rotor motor, which is more durable and ball bearing with long working life over 50000 hours.



IN-LINE AXIAL FAN

- Suitable for Indoor and outdoor installation
- From 315 mm to 1250mm Dia
- Available from 500 CFM to 60000 CFM
- Three Phase
- Application :- Make air Fan, General Extract, Pressurization Lift,Lobby,Staircase etc.

CENTRIFUGAL FAN



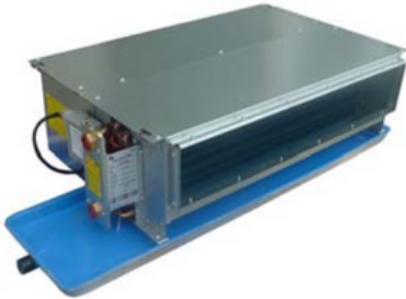
- Suitable for Outdoor installation
- From Impeller size 315 to 1250 size
- Available from 600 CFM to 147000 CFM
- Three Phase
- Application :- Commercial and Industrial Extract, Kitchen Extract etc.

KINAIR WALL MOUNTED FAN COIL UNIT



- The KWM ceiling cassette fan-coil unit is to have a low profile of 250mm.
- The airflow is from 340 to 1360 m³/h; cooling capacity from 1.98kw to 7.05kw.
- Project selection software is available for standard EUROVENT conditions, AHRI (ARI-440-2008) and district cooling conditions.

KINAIR LOW STATIC PRESSURE FAN COIL UNIT



- The KLS low static pressure fan-coil unit is to have a low profile of 245 or 295 mm.
- The airflow is from 340 to 3400 m³/h; cooling capacity from 1.5kw to 11kw (sensible at medium speed).
- Project selection software is available for standard EUROVENT conditions, AHRI (ARI-440-2008) and district cooling conditions.

CONDENSING UNITS



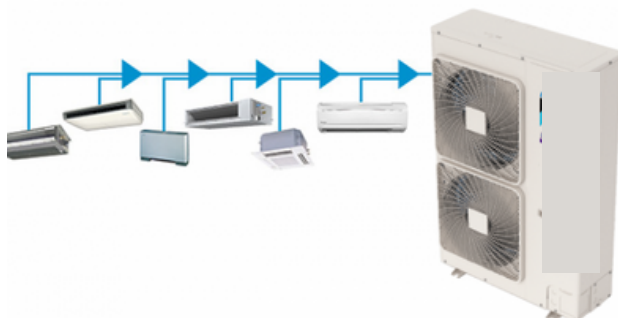
- Casing is made of 1.2 mm thick powder coated GI sheet.
- Scroll compressor has no clearance volume to create losses. Thus, providing higher volumetric efficiency.
- Motors are with two speed, class F insulation, and IP54 protection.
- Heavy duty condenser optimized in design for long-life maintenance free.
- Factory installed unit controller for operational safety control.

PACKAGE UNITS



- HFC R-410A non-ozone depleting refrigerant
- Two independent refrigerant circuits, each with a scroll compressor Liquid filter drier standard on each circuit
- Non-corrosive sloped condensate drain pan in accordance with ASHRAE 62 standard
- Angle type return air section with washable type filters)16-27tons(Air treatment ASHRAE 90.1 Compliant ESMA compliant product EER's up to 12.5 TXV refrigerant metering device Fresh air intake capable Thermally protected fan motors

VRF UNITS



- Wide range of outdoor units, capacity range from 8kW to 22.6kW.
- Flexible indoor units connection.
- Wide operation temperature range from -20°C to 52°C.
- Long piping design with max. equivalent pipe length of 175m.
- High performance heat exchanger.
- Space saving design, plus easy installation.
- Full DC inverter technology.



PRESSURIZATION UNITS

Used to pressurize a system. The Tanks are filled with optimal levels which will allow water to flow freely.



AIR SEPARATOR

It offers a complete, reliable solution for problems with air, microbubbles and sludge in chilled water systems – from initial venting to the separation of the tiniest and finest magnetite particles.

PICV VALVES PETTINAROLI, ITALY IMI

Operating Principles

EvoPICV valve is made up of three main parts.

- Differential pressure regulator.
- Regulating valve for flow adjustment.
- Flow pre-setting knob .



ARCHITECTURAL ELITE 8

Model# AE08



- Quiet, technologically advanced, and beautifully designed.
- 11" high x 23" deep.
- 1/5 hp EC motor(s).
- Factory installed Intelliswitch™ digital controller Berner AIR™ Standard.
- Wall & Top Mounting.

ARCHITECTURAL RECESSED 16

Model# ARC16



- Mounts flush with the ceiling, white aluminum exterior.
- 15" high x 26" deep.
- 1 hp two speed motor(s).
- Factory installed Intelliswitch™ digital controller.
- Top Mounting only.

COMMERCIAL LOW PRO LE 8

Model# CHD10



- Simple design, high performance, white or black powder-coated exterior.
- 14" high x 15" deep.
- 1/2 hp three speed motor(s).
- Built-in fan speed switch.
- Wall & Top Mounting.

INDUSTRIAL DIRECT DRIVE 20

Model# IDC20



- Single speed T.E.A.O. motor(s) - direct drive
- Gray powder-coated aluminized steel exterior and removable lower section
- Top Mounting only.



VIBRATION ISOLATORS

- Free standing, unboxed, laterally stable steel springs. Springs lateral stiffness greater than 1.0 times the rated vertical stiffness.
- Non-skid noise isolation pad.
- Provisions for bolting the isolator.
- Color coded to indicate load capacity.

INERTIA BASES

- Thicknesses of 6 in (152 mm), 8 in (203 mm), 10 in (254 mm) and 12 in (305 mm), and
- Include height saving isolator mounting brackets for use with high deflection springs.
- Standard steel reinforcing rods are 1/2 in (13 mm) diameter and located on 8 in (203 mm) centers each way.



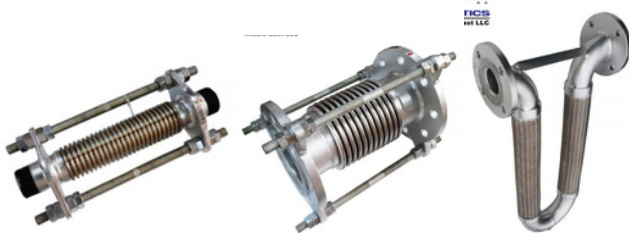
ACOUSTIC LAGGING

- High Acoustic performance
- Highly flexible allowing fast installation times
- Fiber free & non-irritant product
- Very low VOC emissions
- Long lasting performance
- Cost effective
- Standard PU Foam colors



EXPANSION JOINTS

- Precision Fit Flexible Lagging Jackets to suit JP116.
- Consists of stainless steel grade 321 bellows assembly and mating surfaces.
- Suitable for use on H.W.S., L.T.H.W., M.T.H.W., H.T.H.W., Steam, gases and other non-ferrous applications.
- Maximum working temperature 300°C.
- Maximum working pressure 16 bar at 200°C.



STEEL FLEXIBLE CONNECTORS

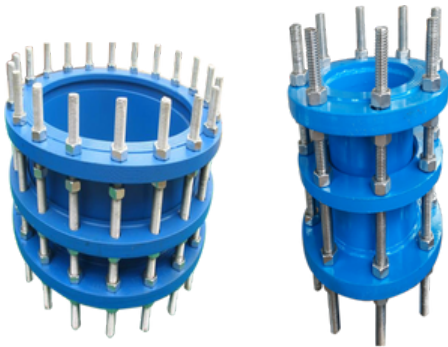
- Types FIC, FTC, KWA and KMA connectors are made of molded EPDM reinforced with nylon tire cord and shall have mild steel floating flanges or female union ends.
- Model BFMC and V-Loop made of (stainless steel) (bronze) flexible bellows with (stainless steel) (bronze) braided outer cover and are (flanged) (threaded) (grooved) carbon steel end fittings.





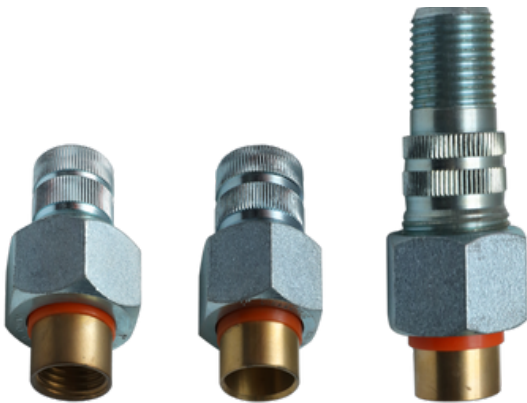
RUBBER FLEXIBLE CONNECTORS

- Operating pressure 225 psi (15.5 bar).
- Burst pressure 682 psig.
- Temperature Range -15°C to +115°C.
- Vacuum Rating 750mm Hg to 500mm Hg Construction.
- EPDM Rubber inner tube and outer cover.
- Synthetic Rubber/Nylon Tire Cord.
- Carbon Steel Rotating Flanges.



DISMANTLING JOINTS

- Flange ductile iron.
- Stud / nut steel with zinc plated.
- Rubber gasket epdm.
- Gland ductile iron.
- Adaptor ductile iron.



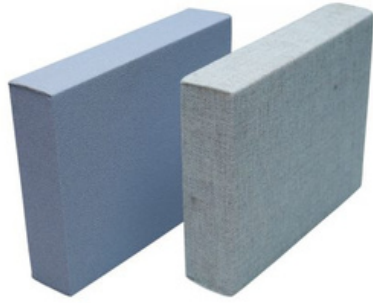
DI ELECTRIC UNIONS

- Thread Connections NPT/BSP threads as per ASME B1.20.1 / G threads as per ISO 228/1.
- Operating Limits Working Pressure 21 bar (300 psi)
Working Temperature: -20°C to 82°C.



ACOUSTIC UNDERLAY

- Granules rubber with polyurethane bonding agent.
- Width : 1,000 mm (± 1.5 %).
- Length : on demand (± 1.5 %).
- Thicknesses: 2.5, 3, 4, 5, 6, 8, 12, 15 mm.
- Density: 760-860 kg/m³.
- Tensile strength: min. 0.3 N/mm² ISO1798.
- Elongation at break: min. 40 % ISO 1798.
- Temperature range : -30 to 120° C.



ACOUSTIC FABRIC PANEL(HARDSIDE)

- Designed for panel sizes up to a maximum 4 ft. x 10 ft. or custom shaped panels with angled or contoured perimeter cuts. A 5 ft. x 10 ft. panel option is available with 66-inch wide fabric.
- Standard thicknesses from 1 to 4 inches.
- Edge treatments: Square, Bevel, Radius and Pencil
- NRC: 0.80 to 1.05.



ACOUSTIC WAVE BAFFLES

- Type SE: Sewn Edges with sailcloth or other fabric facing.
- Type HB: Heat Bonded vinyl encapsulates the fiberglass blanket.
- Both types may be suspended as horizontal clouds or vertical baffles.
- Sizes up to 4 ft. X 30 ft.



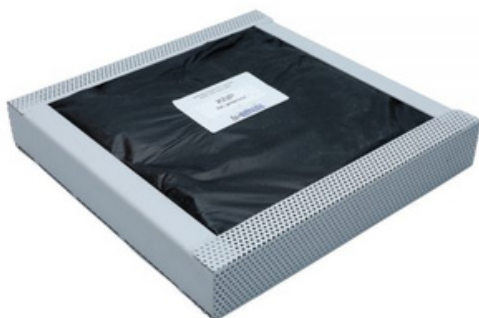
CEILING QUIET TILE

- Tiles are available in nominal 24" x 24" and 24" x 48" sizes.
- Gypsum board
- Viscoelastic sound damping layer.
- Ceiling tile face – can be provided to match existing ceiling tile.
- Available in nominal 2 ft. x 2 ft. or 2 ft. x 4 ft. sizes.



ISOMAX SOUND ISOLATION CLIPS

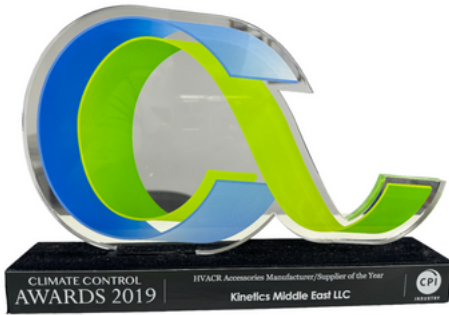
- Completely engulfs furring channel preventing rattling. Bends to allow the clip to adapt and accept all common-sized furring channel.
- Multiple simple methods to install IsoMax.
- No need to pinch furring channel to fit in IsoMax.
- IsoMax does not need to be dead level to accept furring channel.



KNP PERFORATED METAL ACOUSTIC PANELS

- Composition: 20 or 22 gauge perforated galvanized steel or 0.040 perforated aluminum; 2.5 PCF mineral fiber absorber in a 2.0 mil heat sealed black PVC bag.
- Fire Test Data: Class A per ASTM E84.
- Standard sizes up to 42" wide x 120" high or 114" wide x 48" high.
- Special order up to 54" wide x 144" high or 138" wide x 60" high.
- Standard sizes up to 36" wide x 120" high or 96" wide x 48" high.

Awards and Recognition



**HVACR ACCESSORIES
MANUFACTURER/SUPPLIER OF THE YEAR
2019**



**TOP EXPORT SALES AWARD
2001-2016**

Manufacturing unit

Umm Al Quwain
+971 6 568 0014

Offices:

Dubai

+971 4 885 7361

Abu Dhabi

+971 4 885 7361

KINETICS GROUP
P.O.Box: 37670, DIRC – DIP-2,
Jabel Ali, Dubai, U.A.E