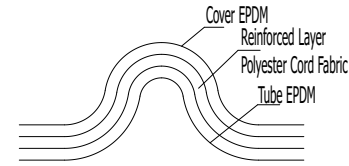
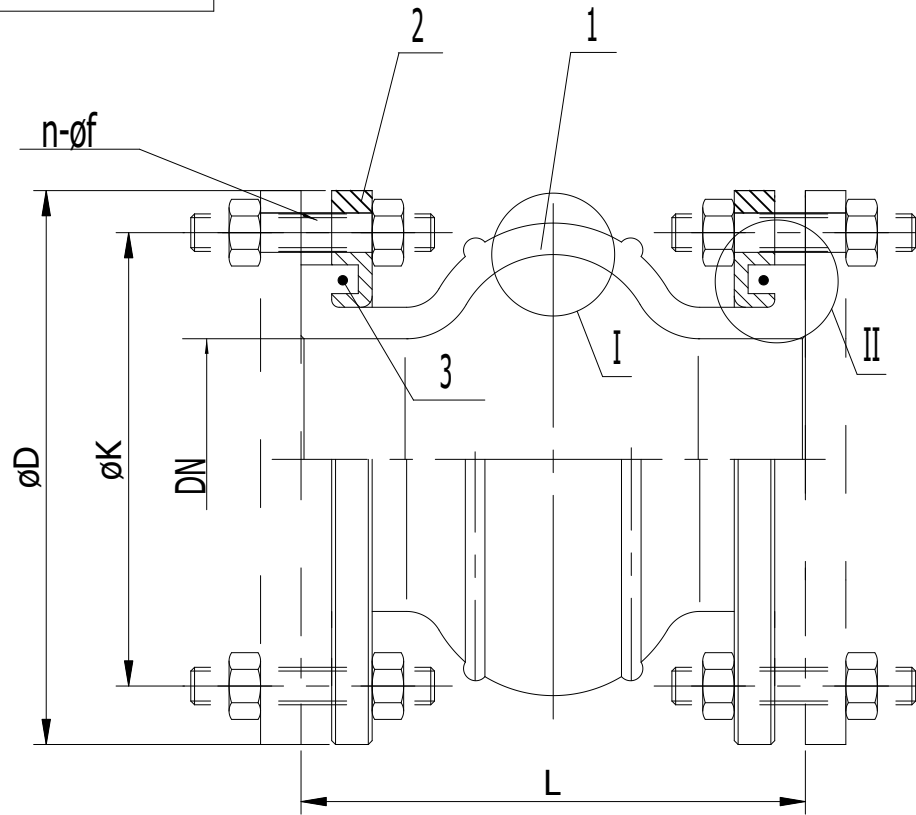
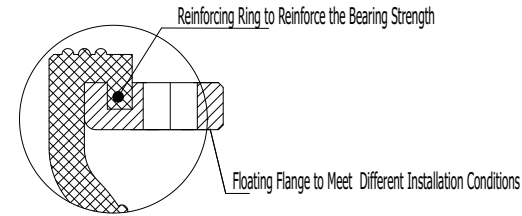


SSR 50NB - 300NB



I details



II details

Performance Specification			
Nominal Pressure		1.6	
Test	Strength Test	2.4	Mpa
	Back Seal Test	1.92	
	Seal Test	1.92	
Pressure	Seal Test	1.92	Mpa
	Gas Seal Test	0.6	
Maximum Working Temp.		115	°C
Medium: Water, Acid, Sea Water, Alkaline and Coal Cinder, etc.			

NO.	DN	ØD	ØK	n-f	L	PN	Axial Compression	Axial Extension	Lateral Displacement	Angular Degree
1	50	165	125	4-ø18	152	16	10	8	10	15°
2	65	185	145	4-ø18	152	16	13	8	12	15°
3	80	200	160	8-ø18	152	16	13	8	12	15°
4	100	220	180	8-ø18	152	16	19	12	13	15°
5	125	250	210	8-ø18	152	16	19	12	13	15°
6	150	285	240	8-ø22	152	16	19	13	13	15°
7	200	340	295	12-ø22	152	16	19	13	13	15°
8	250	405	355	12-ø26	203	16	19	16	19	15°
9	300	460	410	12-ø26	203	16	19	16	19	15°

All dimensions in mm.

MARKER	REVISE	REVISION	SIGNATURE	DATE

3	Reinforced Ring	2	Carbon steel			
2	Flange	2	Carbon steel			Galvanized
1	Rubber Bellow	1	EPDM			
NO.	PART NAME	QTY.	MATERIAL	UNIT WEIGHT	TOTAL WEIGHT	REMARK



Engineered Solutions Ltd.

Unit 1, Heol Cropin, Dafen Park, Llanelli
SA14 8QW Wales UK
Tel: +44(0)1554 744500
Fax: +44(0)1554 746435

MARKER	QTY	WEIGHT	SCALE
			1:2.5

Rubber Expansion Joint

SSR 50NB - 300NB