

DECLARATION:

KINAIR retains the sole right to change product design and or specifications without notice. Images presented herein may differ significantly from the delivered products. Information contained herein is for general consideration only as our products are subject to change. KINAIR is the sole interpreter of the information provided within this catalogue.



KINETICS Group

Dubai Investment Park-2, Jebel Ali, Dubai, U.A.E
Tel. : +971 4 885 7361 | Email : info@kineticsgroup.ae |
Web : www.kineticsgroup.ae



AIR CURTAIN

Product Technical Catalogue



AIR CURTAIN



T1

CENTRIFUGAL FLOW AIR CURTAIN

LUXURY DESIGN

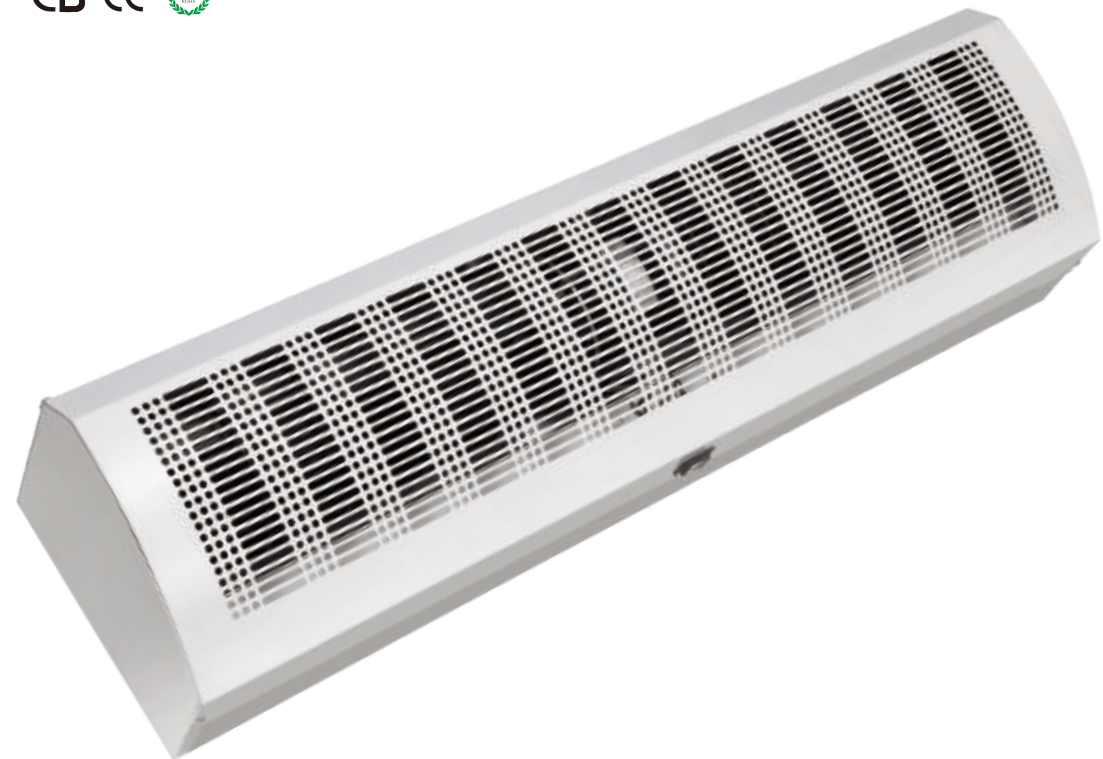
- **Fashionable appearance design:** Adopting hexagonal hole punching, strong rigidity and fashion, serializing together with H3 and H5.
- **Unique segmented splice panel design:** front panel splicing with upper and lower plate, can be multi-matching as: white + black, all black, all white, etc.
- **High efficiency motor:** Adopting self-made motor, powerful, lower noise and more reliable.
- **Multi control ways:** With new generation remote control and manual key control design, the operation is more convenient, standard two speeds, three speeds for option, which is applicable for vary places.
- **Intelligent magnetic door switch (Optional):** Realizing humanized control of door opening and closing, greatly reduce indoor air outflow and save energy.



Parameters

Voltage/Frequency: 220-240V/50Hz, or 110V/60Hz, 110V/50Hz, 220V/60Hz are all available.

| Model | Voltage/ Frequency (mm) | Input Power (W) | | Air Velocity (m/s) | | Air Volume (m³/h)/CFM | | Noise (dB) | | Unit Size (mm) | Packaging Size (mm) | Mounting Height (m) |
|---------------|-------------------------------|--------------------|-----|-----------------------|----|--------------------------|----------|---------------|-----|-------------------|------------------------|------------------------|
| | | H | L | H | L | H | L | H | L | | | |
| FM-3509T1-L/Y | 220V/50Hz | 223 | 163 | 16 | 12 | 1160/682 | 920/541 | ≤48 | ≤46 | 900x262x227 | 940x310x295 | 3-3.5 |
| FM-3512T1-L/Y | 220V/50Hz | 284 | 208 | 16 | 12 | 1450/852 | 1170/688 | ≤47 | ≤45 | 1200x262x227 | 1240x310x295 | 3-3.5 |
| FM-3515T1-L/Y | 220V/50Hz | 370 | 272 | 16 | 12 | 1820/1070 | 1470/864 | ≤50 | ≤47 | 1500x262x227 | 1540x310x295 | 3-3.5 |



N CROSS FLOW AIR CURTAIN

- **Classic curved panel design:** hexagonal hole + rounded rectangular embossing, fashionable and atmospheric, and the panel is more rigid.
- **Mature product structure:** mature model, stable performance, convenient installation and maintenance, stable air flow to slow the air speed decays, and more significant air curtain effect.
- **High-efficiency motor + U-shaped motor bracket and special anti-vibration rubber:** using self-produced motor, strong power, with U-shaped motor bracket and special anti-vibration glue, low noise and reliable performance.
- **Multi control modes:** adopt remote control and manual button mode, the operation is more convenient, standard 2-speed wind speed, can be 3 speeds for option, suitable for use in a variety of places.
- **Intelligent magnetic door switch (optional):** realize the humanized control of door opening and closing, greatly reduce the outflow of indoor air, and save more energy.
- **Can be equipped with air inlet filter.**



Parameters

Voltage/Frequency: 220-240V/50Hz, or 110V/60Hz, 110V/50Hz, 220V/60Hz are all available.

| Model | Diameter of Impeller (mm) | Input Power (W) | Air Velocity (m/s) | Air Volume (m³/h)/CFM | Noise (dB) | Net Weight (KG) | Gross Weight (KG) | Unit Size (mm) | Carton Size (mm) | Mounting Height (m) |
|---------------|---------------------------|-----------------|--------------------|-----------------------|------------|-----------------|-------------------|----------------|------------------|---------------------|
| FM-1206N-2(Y) | 120 | 120 | 11.0 | 1190/700 | ≤42 | 9.4 | 10.4 | 600×220×195 | 660×280×250 | 2.3-3 |
| FM-1209N-2(Y) | 120 | 150 | 11.0 | 1780/1047 | ≤45 | 12.8 | 14.3 | 900×220×195 | 960×280×250 | 2.3-3 |
| FM-1210N-2(Y) | 120 | 180 | 11.0 | 1980/1164 | ≤45 | 13.8 | 15.5 | 1000×220×195 | 1060×280×250 | 2.3-3 |
| FM-1212N-2(Y) | 120 | 180 | 11.0 | 2370/1394 | ≤47 | 15.7 | 17.7 | 1200×220×195 | 1260×280×250 | 2.3-3 |
| FM-1215N-2(Y) | 120 | 220 | 11.0 | 2970/1747 | ≤47 | 19.9 | 22.4 | 1500×220×195 | 1560×280×250 | 2.3-3 |
| FM-1218N-2(Y) | 120 | 280 | 11.0 | 3560/2094 | ≤50 | 23.0 | 26.0 | 1800×220×195 | 1860×280×250 | 2.3-3 |
| FM-1220N-2(Y) | 120 | 320 | 11.0 | 3960/2329 | ≤51 | 24.5 | 28.0 | 2000×220×195 | 2060×280×250 | 2.3-3 |
| FM-1509N-2(Y) | 150 | 165 | 11.0-12.0 | 1960/1153 | ≤47 | 18.0 | 19.5 | 900×255×225 | 960×320×280 | 3-3.5 |
| FM-1512N-2(Y) | 150 | 180 | 11.0-12.0 | 2610/1535 | ≤49 | 21.8 | 23.8 | 1200×255×225 | 1260×320×280 | 3-3.5 |
| FM-1515N-2(Y) | 150 | 240 | 11.0-12.0 | 3260/1918 | ≤50 | 27.0 | 29.5 | 1500×255×225 | 1560×320×280 | 3-3.5 |

SUPER UV LIGHT GERMICIDAL AIR CURTAIN

- The UV lamp uses high-quality high-purity quartz material, with a service life of 8000 ~ 13000 hours;
- High-power ozone-free type UV lamp, the main spectrum is 253.7nm, which can kill all kinds of bacteria, viruses and microorganisms;
- UV light decay is small, and the UV intensity decay is less than 30% during its life;
- Effectively isolate outdoor bacteria, bugs and dust;
- Disinfection and discharge of indoor air, to reach air recycling;
- Also can run only UV lamp sterilization function.



Parameters

Mounting Height: 2.5-3m

| Model | Voltage/Frequency (V/Hz) | Input Power (W) | | Air Velocity (m/s) | | Air Volume (m³/h)/CFM | | Noise (dB) | | Net Weight (KG) | Unit Size (mm) | Uv Power (W) | Uv Light Intensity (uw/cm²) | | |
|-----------------|--------------------------|-----------------|-----|--------------------|-------|-----------------------|-----|------------|-----------|-----------------|----------------|--------------|-----------------------------|----|-----|
| | | H | L | H | L | H | L | H | L | | | | | | |
| | | UV ON UV OFF | | | | | | | | | | | Distance of 1 m | | |
| FM-1209-UV1/2Y4 | 220/50 | 220 | 175 | 158 | 101.6 | 11 | 8.5 | 1780/1047 | 1375/809 | ≤46 | ≤43 | 16 | 900×234×266 | 37 | 120 |
| FM-1212-UV1/2Y4 | 220/50 | 248 | 179 | 220 | 142 | 11 | 8.5 | 2370/1394 | 1830/1076 | ≤48 | ≤45 | 20 | 1200×234×266 | 40 | 135 |
| FM-1215-UV1/2Y4 | 220/50 | 298 | 233 | 274 | 180 | 11 | 8.5 | 2970/1747 | 2230/1312 | ≤51 | ≤47 | 24 | 1500×234×266 | 55 | 170 |



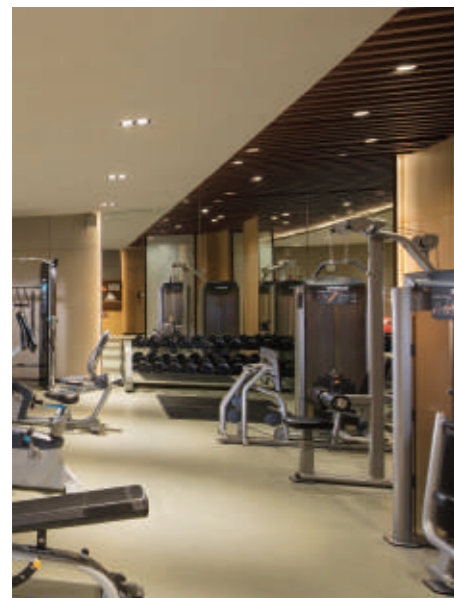
N CENTRIFUGAL FLOW AIR CURTAIN

- **Classic curved panel design:** hexagonal hole + rounded rectangular embossing, fashionable and atmospheric, and the panel is more rigid
- **Mature product structure:** mature model, stable performance, convenient installation and maintenance, stable air flow to slow the air speed decays, and more significant air curtain effect
- **High-efficiency motor:** use self-developed, self-produced motor, coupled with low-noise, high-speed centrifugal volute, strong power, low noise, and reliable performance
- **Multi control modes:** adopt remote control and manual button mode, the operation is more convenient, standard 2-speed wind speed, can be 3 speeds for option, suitable for use in a variety of places.
- **Intelligent magnetic door switch (optional):** realize the humanized control of door opening and closing, greatly reduce the outflow of indoor air, and save more energy
- Can be equipped with air inlet filter

Parameters

Voltage/Frequency: 220-240V/50Hz, or 110V/60Hz, 110V/50Hz, 220V/60Hz are all available.

| Model | Diameter of Impeller (mm) | Input Power (W) | Air Velocity (m/s) | Air Volume (m³/h)/CFM | Noise (dB) | Net Weight (KG) | Gross Weight (KG) | Unit Size (mm) | Carton Size (mm) | Mounting Height (m) |
|--------------|---------------------------|-----------------|--------------------|-----------------------|------------|-----------------|-------------------|----------------|------------------|---------------------|
| | | | | | | | | | | |
| FM-3509-L(Y) | 120 | 230 | 14.5 | 1020/600 | ≤44 | 16.0 | 17.5 | 900×220×212 | 960×290×270 | 3-3.5 |
| FM-3510-L(Y) | 120 | 230 | 14.5 | 1020/600 | ≤44 | 17.5 | 19.8 | 1000×220×212 | 1060×290×270 | 3-3.5 |
| FM-3512-L(Y) | 120 | 305 | 14.5 | 1360/800 | ≤45 | 19.0 | 21.0 | 1200×220×212 | 1260×290×270 | 3-3.5 |
| FM-3515-L(Y) | 120 | 380 | 14.5 | 1700/1000 | ≤48 | 25.0 | 27.5 | 1500×220×212 | 1560×290×270 | 3-3.5 |
| FM-3518-L(Y) | 120 | 450 | 14.5 | 2040/1200 | ≤51 | 30.0 | 33.0 | 1800×220×212 | 1860×290×270 | 3-3.5 |
| FM-4509-L(Y) | 120 | 360 | 18.0 | 1260/741 | ≤46 | 16.5 | 18.0 | 900×220×212 | 960×290×270 | 4-4.5 |
| FM-4510-L(Y) | 120 | 360 | 18.0 | 1260/741 | ≤46 | 17.5 | 19.3 | 1000×220×212 | 1060×290×270 | 4-4.5 |
| FM-4512-L(Y) | 120 | 495 | 18.0 | 1680/988 | ≤47 | 21.0 | 23.0 | 1200×220×212 | 1260×290×270 | 4-4.5 |
| FM-4515-L(Y) | 120 | 605 | 18.0 | 2100/1235 | ≤50 | 26.0 | 29.5 | 1500×220×212 | 1560×290×270 | 4-4.5 |
| FM-4518-L(Y) | 120 | 750 | 18.0 | 2520/1482 | ≤53 | 30.5 | 33.5 | 1800×220×212 | 1860×290×270 | 4-4.5 |
| FM-5509-L(Y) | 120 | 450 | 21.0 | 1520/894 | ≤52 | 17.5 | 19.0 | 900×220×212 | 960×290×270 | 5-5.5 |
| FM-5510-L(Y) | 120 | 450 | 21.0 | 1520/894 | ≤52 | 19.0 | 20.8 | 1000×220×212 | 1060×290×270 | 5-5.5 |
| FM-5512-L(Y) | 120 | 600 | 21.0 | 2027/1192 | ≤54 | 21.5 | 23.5 | 1200×220×212 | 1260×290×270 | 5-5.5 |
| FM-5515-L(Y) | 120 | 750 | 21.0 | 2534/1490 | ≤55 | 27.0 | 29.5 | 1500×220×212 | 1560×290×270 | 5-5.5 |
| FM-5518-L(Y) | 120 | 900 | 21.0 | 3040/1788 | ≤58 | 31.0 | 34.0 | 1800×220×212 | 1860×290×270 | 5-5.5 |



XD (for Recessed Mounting)

CENTRIFUGAL FLOW AIR CURTAIN

- **Ceiling recessed design:** the panel integrated with the ceiling, novel appearance.
- **Unique air inlet and outlet design:** air inlet and outlet are integrated, and the installation is easy. The structure of the whole machine is compact, the air in and out is stable and even, and the effect of the air curtain is more remarkable when it is installed indoor.
- **High-efficiency motor:** use self-produced motor, coupled with low-noise, high-speed centrifugal volute, strong power, low noise, suitable for indoor use, reliable performance
- **Multi control modes:** adopt remote control and wire control, suitable for indoor use in a variety of places.
- Stainless Steel panel (Optional).

Parameters

Voltage/Frequency: 220-240V/50Hz, or 110V/60Hz, 110V/50Hz, 220V/60Hz are all available.

| Model | Input Power (W) | | Air Velocity (m/s) | | Air Volume (m³/h)/CFM | | Noise (dB) | | Net Weight (KG) | Gross Weight (KG) | Unit Size (mm) | Carton Size (mm) | Remarks |
|-------------------|-----------------|-----|--------------------|------|-----------------------|-----------|------------|-----|-----------------|-------------------|----------------|------------------|----------------------|
| | H | L | H | L | H | L | H | L | | | | | |
| FM-3509XD(B)-L(Y) | 210 | 157 | 15.5 | 12.5 | 1090/641 | 880/518 | ≤45 | ≤43 | 17.5 | 19 | 900x245x233 | 950x315x270 | Stainless Steel(PCM) |
| FM-3510XD(B)-L(Y) | 210 | 157 | 15.5 | 12.5 | 1090/641 | 880/518 | ≤45 | ≤43 | 18.8 | 20.5 | 1000x245x233 | 1050x315x270 | Stainless Steel(PCM) |
| FM-3512XD(B)-L(Y) | 280 | 211 | 15.5 | 12.5 | 1450/853 | 1170/688 | ≤47 | ≤45 | 21 | 23 | 1200x245x233 | 1250x315x270 | Stainless Steel(PCM) |
| FM-3515XD(B)-L(Y) | 350 | 258 | 15.5 | 12.5 | 1820/1070 | 1470/865 | ≤50 | ≤47 | 27 | 29.5 | 1500x245x233 | 1550x315x270 | Stainless Steel(PCM) |
| FM-3518XD(B)-L(Y) | 424 | 315 | 15.5 | 12.5 | 2200/1276 | 1758/1030 | ≤53 | ≤50 | 31.5 | 34.5 | 1800x245x233 | 1850x315x270 | Stainless Steel(PCM) |
| FM-3520XD(B)-L(Y) | 424 | 315 | 15.5 | 12.5 | 2200/1276 | 1758/1030 | ≤53 | ≤50 | 34.5 | 37.5 | 2000x245x233 | 2050x315x270 | Stainless Steel(PCM) |
| FM-4509XD(B)-L(Y) | 300 | 224 | 19.0 | 15.5 | 1400/842 | 1090/641 | ≤48 | ≤46 | 18 | 19.5 | 900x245x233 | 950x315x270 | Stainless Steel(PCM) |
| FM-4510XD(B)-L(Y) | 300 | 224 | 19.0 | 15.5 | 1400/842 | 1090/641 | ≤48 | ≤45 | 19.3 | 21 | 1000x245x233 | 1050x315x270 | Stainless Steel(PCM) |
| FM-4512XD(B)-L(Y) | 400 | 310 | 19.0 | 15.5 | 1850/1088 | 1450/853 | ≤49 | ≤47 | 21.5 | 23.5 | 1200x245x233 | 1250x315x270 | Stainless Steel(PCM) |
| FM-4515XD(B)-L(Y) | 500 | 379 | 19.0 | 15.5 | 2270/1335 | 1820/1071 | ≤52 | ≤50 | 27.5 | 30 | 1500x245x233 | 1550x315x270 | Stainless Steel(PCM) |
| FM-4518XD(B)-L(Y) | 610 | 480 | 19.0 | 15.5 | 2800/1635 | 2010/1182 | ≤56 | ≤54 | 32 | 35 | 1800x245x233 | 1850x315x270 | Stainless Steel(PCM) |
| FM-4520XD(B)-L(Y) | 610 | 480 | 19.0 | 15.5 | 2800/1635 | 2010/1182 | ≤56 | ≤54 | 34.5 | 37.5 | 2000x245x233 | 2050x315x270 | Stainless Steel(PCM) |
| FM-5509XD(B)-L(Y) | 415 | 310 | 22.0 | 18.5 | 1550/912 | 1300/765 | ≤52 | ≤50 | 18.5 | 20 | 900x245x233 | 950x315x270 | Stainless Steel(PCM) |
| FM-5510XD(B)-L(Y) | 415 | 310 | 22.0 | 18.5 | 1550/912 | 1300/765 | ≤52 | ≤50 | 19.8 | 21.5 | 1000x245x233 | 1050x315x270 | Stainless Steel(PCM) |
| FM-5512XD(B)-L(Y) | 520 | 430 | 22.0 | 18.5 | 1850/1088 | 1680/988 | ≤53 | ≤51 | 22 | 24 | 1200x245x233 | 1250x315x270 | Stainless Steel(PCM) |
| FM-5515XD(B)-L(Y) | 705 | 534 | 22.0 | 18.5 | 2300/1352 | 2100/1235 | ≤56 | ≤53 | 28 | 30.5 | 1500x245x233 | 1550x315x270 | Stainless Steel(PCM) |
| FM-5518XD(B)-L(Y) | 840 | 702 | 22.0 | 18.5 | 3240/1905 | 2400/1411 | ≤59 | ≤55 | 32.5 | 36.0 | 1800x245x233 | 1850x315x270 | Stainless Steel(PCM) |
| FM-5520XD(B)-L(Y) | 840 | 702 | 22.0 | 18.5 | 3240/1905 | 2400/1411 | ≤59 | ≤55 | 35.5 | 38.5 | 2000x245x233 | 2050x315x270 | Stainless Steel(PCM) |





AIR CURTAIN

H3 EC Motor Air Curtain



Metal casing



Adjustable air deflector



High efficient motor



Quiet wind wheel



Remote control



Magnetic door

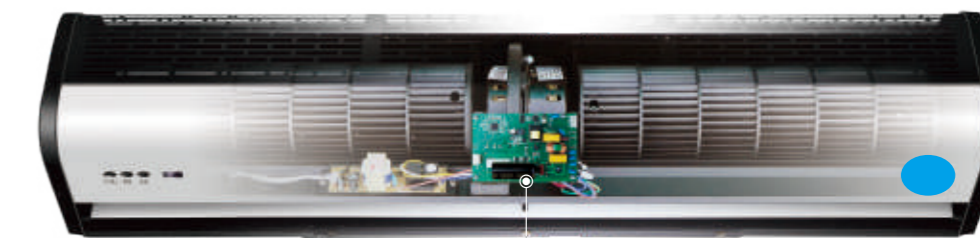
Optional:



H3 (EC) VARIABLE-FREQUENCY AIR CURTAIN

ENERGY SAVING

- Motor efficiency can reach 88%.
- The efficiency of the air curtain can reach 70%, 35% higher than ordinary motors.
- Optional wire control and remote control.
- Power supply is optional with double voltage and double frequency(110-220V,50/60Hz).
- Stepless speed regulation can be realized by external current 4-20mA, PWM pulse signal or voltage 0-10V.
- With phase deficiency , over voltage , blocking , over current , temperature and other protection functions.
- The air curtain has high energy saving , high efficiency , long life and low noise.



EC PCB

Parameters

2 SPEEDS (With Or W/O The Remote Control)

| Model | Voltage/Frequency (V/Hz) | Input Power (W) | Air Velocity (m/s) | Air Volume (m³/h) | Noise (dB) | Diameter Of Impeller (mm) | Net Weight (KG) | Gross Weight (KG) | Unit Size (mm) | The Installation Height (m) |
|-----------------|--------------------------|-----------------|--------------------|-------------------|------------|---------------------------|-----------------|-------------------|----------------|-----------------------------|
| FM-1009H3-E2(Y) | 110-240V/50-60Hz | 75 | 10-11 | 1550 | ≤45 | 100 | 9.1 | 10.6 | 910×178×176 | 2.3-3 |
| FM-1010H3-E2(Y) | 110-240V/50-60Hz | 83 | 10-11 | 1720 | ≤45 | 100 | 9.8 | 11.5 | 1005×178×176 | 2.3-3 |
| FM-1012H3-E2(Y) | 110-240V/50-60Hz | 95 | 10-11 | 2130 | ≤46 | 100 | 11.5 | 13.5 | 1205×178×176 | 2.3-3 |
| FM-1015H3-E2(Y) | 110-240V/50-60Hz | 113 | 10-11 | 2650 | ≤48 | 100 | 14.3 | 16.8 | 1500×178×176 | 2.3-3 |

* E: EC motor; D: DC motor



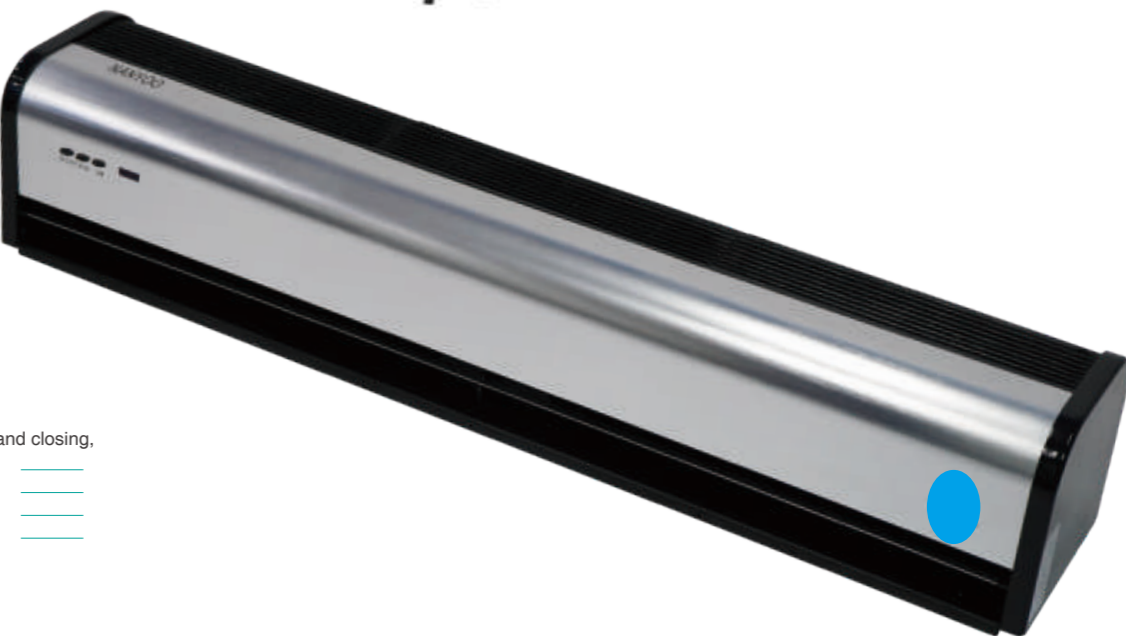
H3 CROSS FLOW AIR CURTAIN

- **Fashionable appearance design:** Applying quadrate hole punching design, fashionable looks, serializing together with H5 and H7.
- **Improved air duct design:** convenient for assembling, bringing powerful, smooth and even air flow, making a great air curtain effect, and the installing high will be roundly 0.3m higher than competitor.
- **Unique segmented splice panel design:** front panel splicing with upper and lower plate, can be multi-matching as: white + black, all black, all white, etc.
- **High efficiency motor:** Adopting self-made motor, powerful, low noise, more reliable.
- **Multi-control ways:** With remote control receiver and manual key design, the operation is more convenient, standard two speeds, three speeds for option, which is suitable for a variety of places.
- **Intelligent magnetic door switch (Optional):** Realize humanized control of door opening and closing, greatly reduce indoor air outflow and save energy.
- **Double voltage (For option):** Motor can be optional for 110V/220V, suitable for some area with double voltage like Taiwan, South America.



H5 CROSS FLOW AIR CURTAIN

- **High-end appearance design:** Applying aluminum panel, fashionable looks, serializing together with H3 and H7.
- **Improved air duct design:** convenient for assembling, bringing powerful, smooth and even air flow, making a great air curtain effect, and the installing high will be roundly 0.3m higher than competitor.
- **Unique segmented splice panel design:** front panel splicing with upper and lower plate, diversified for panel choosing like frosted aluminum, drawing process aluminum, etc.
- **High efficiency motor:** Adopting self-made motor, powerful, low noise, more reliable.
- **Multi-control ways:** Multi-control ways: With remote control and manual key design, the operation is more convenient, standard 2 speeds, 3 speeds for option, which is suitable for a variety of places.
- **Intelligent magnetic door switch (Optional):** Realize humanized control of door opening and closing, greatly reduce indoor air outflow and save energy.
- **Double voltage (For option):** Motor can be optional for 110V/220V, suitable for some area with double voltage like Taiwan, South America.



Parameters

2 SPEEDS (With Or W/O The Remote Control)
Voltage/Frequency: 220-240V/50Hz, or 110V/60Hz, 110V/50Hz, 220V/60Hz are all available.

| Model | Voltage/Frequency (V/Hz) | Input Power (W) | Air Velocity (m/s) | Air Volume (m³/h) | Noise (dB) | Diameter Of Impeller (mm) | Net Weight (KG) | Gross Weight (KG) | Unit Size (mm) | The Installation Height (m) |
|-----------------|--------------------------|-----------------|--------------------|-------------------|------------|---------------------------|-----------------|-------------------|----------------|-----------------------------|
| FM-1009H3-2 (Y) | 220-240V/50Hz | 100 | 10-11 | 1550 | ≤45 | 100 | 9.1 | 10.6 | 910×178×176 | 2.3-3 |
| FM-1010H3-2 (Y) | 220-240V/50Hz | 115 | 10-11 | 1720 | ≤45 | 100 | 9.8 | 11.5 | 1005×178×176 | 2.3-3 |
| FM-1012H3-2 (Y) | 220-240V/50Hz | 135 | 10-11 | 2130 | ≤46 | 100 | 11.5 | 13.5 | 1205×178×176 | 2.3-3 |
| FM-1015H3-2 (Y) | 220-240V/50Hz | 150 | 10-11 | 2650 | ≤48 | 100 | 14.3 | 16.8 | 1500×178×176 | 2.3-3 |
| FM-1018H3-2 (Y) | 220-240V/50Hz | 180 | 10-11 | 3200 | ≤50 | 100 | 17.5 | 20.3 | 1795×178×176 | 2.3-3 |
| FM-1020H3-2 (Y) | 220-240V/50Hz | 185 | 10-11 | 3550 | ≤52 | 100 | 18.8 | 22.0 | 2000×178×176 | 2.3-3 |

Back diagram



Vertical view



Parameters

2 SPEEDS (With Or W/O The Remote Control)
Voltage/Frequency: 220-240V/50Hz, or 110V/60Hz, 110V/50Hz, 220V/60Hz are all available.

| Model | Voltage/Frequency (V/Hz) | Input Power (W) | Air Velocity (m/s) | Air Volume (m³/h) | Noise (dB) | Diameter Of Impeller (mm) | Net Weight (KG) | Gross Weight (KG) | Unit Size (mm) | The Installation Height (m) |
|-----------------|--------------------------|-----------------|--------------------|-------------------|------------|---------------------------|-----------------|-------------------|----------------|-----------------------------|
| FM-1009H5-2 (Y) | 220-240V/50Hz | 100 | 10-11 | 1550 | ≤45 | 100 | 9.1 | 10.6 | 910×178×176 | 2.3-3 |
| FM-1012H5-2 (Y) | 220-240V/50Hz | 135 | 10-11 | 2130 | ≤46 | 100 | 11.5 | 13.5 | 1205×178×176 | 2.3-3 |
| FM-1015H5-2 (Y) | 220-240V/50Hz | 150 | 10-11 | 2650 | ≤48 | 100 | 14.3 | 16.8 | 1500×178×176 | 2.3-3 |
| FM-1018H5-2 (Y) | 220-240V/50Hz | 180 | 10-11 | 3200 | ≤50 | 100 | 17.5 | 20.3 | 1795×178×176 | 2.3-3 |

Vertical view



H7 CROSS FLOW AIR CURTAIN

- **Fashionable appearance design:** Adopting hexagonal hole punching, strong rigidity and fashion, serializing together with H3 and H5.
- **Unique segmented splice panel design:** front panel splicing with upper and lower plate, can be multi-matching as: white + black, all black, all white, etc.
- **High efficiency motor:** Adopting self-made motor, powerful, lower noise and more reliable.
- **Multi control ways:** With new generation remote control and manual key control design, the operation is more convenient, standard two speeds, three speeds for option, which is applicable for vary places.
- **Intelligent magnetic door switch (Optional):** Realizing humanized control of door opening and closing, greatly reduce indoor air outflow and save energy.



Parameters

2 SPEEDS (With Or W/O The Remote Control)

Voltage/Frequency: 220-240V/50Hz, or 110V/60Hz, 110V/50Hz, 220V/60Hz are all available.

| Model | Voltage/Frequency (V/Hz) | Input Power (W) | Air Velocity (m/s) | Air Volume (m³/h) | Noise (dB) | Diameter Of Impeller (mm) | Net Weight (KG) | Unit Size (mm) | Packing size (mm) | The Installation Height (m) |
|-----------------|--------------------------|-----------------|--------------------|-------------------|------------|---------------------------|-----------------|----------------|-------------------|-----------------------------|
| FM-1209H7-2 (Y) | 220-240V/50Hz | 150 | 11-12 | 1780 | ≤45 | 120 | 13 | 900×225×190 | 960×280×255 | 2.3-3 |
| FM-1210H7-2 (Y) | 220-240V/50Hz | 160 | 11-12 | 1980 | ≤45 | 120 | 14.2 | 1000×225×190 | 1060×280×255 | 2.3-3 |
| FM-1212H7-2 (Y) | 220-240V/50Hz | 170 | 11-12 | 2370 | ≤48 | 120 | 16.2 | 1200×225×190 | 1260×280×255 | 2.3-3 |
| FM-1215H7-2 (Y) | 220-240V/50Hz | 180 | 11-12 | 2970 | ≤49 | 120 | 18.8 | 1500×225×190 | 1560×280×255 | 2.3-3 |
| FM-1218H7-2 (Y) | 220-240V/50Hz | 240 | 11-12 | 3560 | ≤51 | 120 | 21.9 | 1800×225×190 | 1860×280×255 | 2.3-3 |

Back diagram



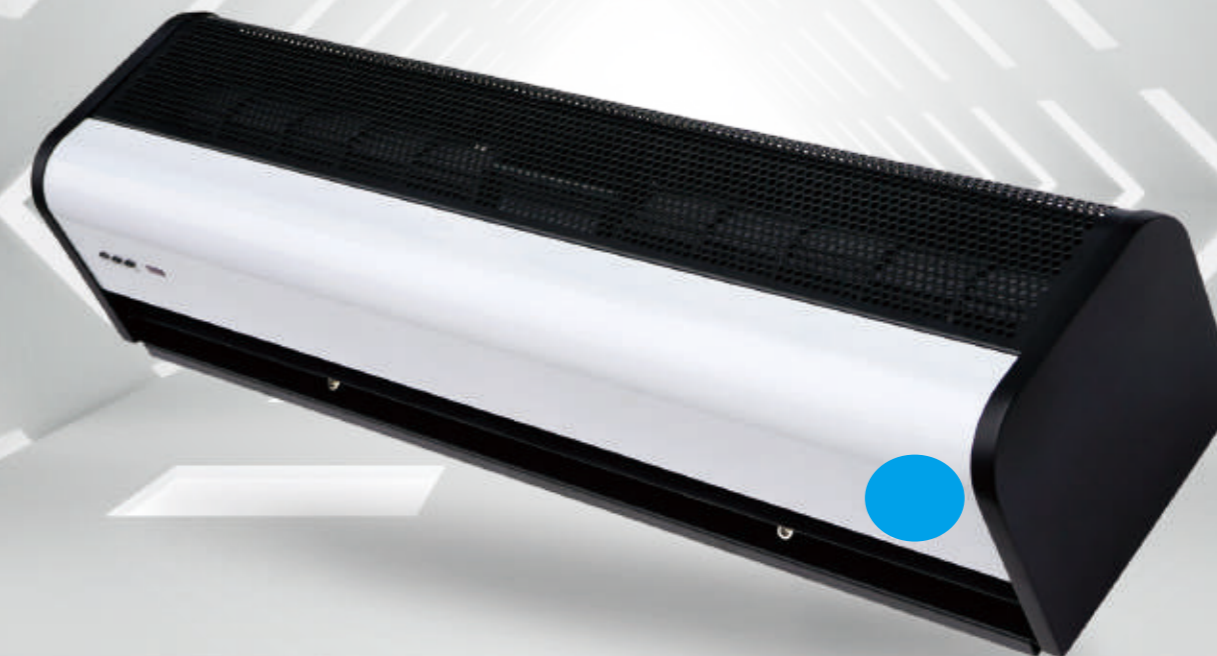
White



H7

CROSS FLOW AIR CURTAIN

STABLE PERFORMANCE





- **Fashionable appearance design:** Applying frosted aluminum, high-end and elegant, easy for cleaning.
- **Unique air duct and air inlet design:** bringing powerful, smooth and even air flow making a great air curtain effect, the installing height will be roundly 0.3m higher than competitor.
- **High efficiency motor:** Adopting self-made motor, powerful, lower noise and more reliable.
- **Multi-control ways:** With new generation of remote control receiver and manual key design, the operation is more convenient, standard two speeds, three speeds for option, which is suitable for a variety of places.
- **Intelligent magnetic door switch (Optional):** Realize humanized control of door opening and closing, greatly reduce indoor air outflow and save energy

T3

CROSS FLOW AIR CURTAIN

SIMPLE AND TASTEFUL



Parameters

| Model | Voltage/ Frequency (V/Hz) | Diameter of Impeller (mm) | Input Power (W) | | Air Velocity (m/s) | | Air Volume (m³/h)/CFM | | Noise (dB) | | Net Weight (KG) | Gross Weight (KG) | Unit Size (mm) | Carton Size (mm) | Mounting Height (m) |
|----------------|---------------------------------|---------------------------------|-----------------------|-------|--------------------------|------|-----------------------------|-----------|---------------|-----|-----------------------|-------------------------|----------------------|------------------------|---------------------------|
| | | | H | L | H | L | H | L | H | L | | | | | |
| FM-1209T3-2(Y) | 220/50 | 120 | 125.4 | 85.2 | 11.1 | 10 | 1600/941 | 1400/823 | ≤54 | ≤50 | 12.5 | 14.6 | 900*220*197 | 955*275*265 | 2.3-3 |
| FM-1209T3-2(Y) | 220/60 | 120 | 129.8 | 94.4 | 13 | 11 | 1800/1058 | 1600/941 | ≤56 | ≤52 | 12.5 | 14.6 | 900*220*197 | 955*275*265 | 2.3-3 |
| FM-1212T3-2(Y) | 220/50 | 120 | 168 | 128.6 | 11 | 9.1 | 1750/1029 | 1500/882 | ≤57 | ≤53 | 15.6 | 17.4 | 1200*220*197 | 1255*275*265 | 2.3-3 |
| FM-1212T3-2(Y) | 220/60 | 120 | 173 | 98.5 | 12.7 | 10.4 | 2000/1176 | 1800/1058 | ≤56 | ≤52 | 15.6 | 17.4 | 1200*220*197 | 1255*275*265 | 2.3-3 |
| FM-1215T3-2(Y) | 220/50 | 120 | 220 | 187 | 11.2 | 9.3 | 2200/1294 | 1900/1117 | ≤58 | ≤54 | 17.5 | 19.3 | 1500*220*197 | 1555*275*265 | 2.3-3 |
| FM-1215T3-2(Y) | 220/60 | 120 | 223 | 198 | 12.7 | 10.4 | 2500/1470 | 2100/1235 | ≤58 | ≤54 | 17.5 | 19.3 | 1500*220*197 | 1555*275*265 | 2.3-3 |



X CROSS FLOW AIR CURTAIN

- **Aesthetic flow panel design:** adopting hexagonal holes & rounded rectangle punching, fashionable and ritzy stronger panel rigidity.
- **Integrated air duct design:** the air outlet is stable, the air speed decays slowly, and the air curtain effect is more significant.
- **High-efficiency motor:** using independent R&D and self-produced motor, strong power, low noise and reliable performance.
- **Multi control modes:** adopt remote control and manual button mode, the operation is more convenient, standard 2-speed wind speed, can be 3 speeds for option, suitable for use in a variety of places.
- **Intelligent magnetic door switch (optional):** realize the humanized control of door opening and closing, greatly reduce the outflow of indoor air, and save more energy.



X3 CROSS FLOW AIR CURTAIN

- **Aesthetic flow panel design:** adopting hexagonal holes & rounded rectangle punching, fashionable and ritzy stronger panel rigidity;
- **Optimize air outlet design:** adopts a larger wind wheel than the economic model of competitors and the wind force is strong, and the air speed is 0.3 m/s higher than the others;
- **High-efficiency motor:** using independent R&D and self-produced motor, strong power, low noise and reliable performance;
- **Multi control modes:** adopt remote control and manual button mode, the operation is more convenient, standard 2-speed wind speed, can be 3 speeds for option, suitable for use in a variety of places;
- **Intelligent magnetic door switch (optional):** realize the humanized control of door opening and closing, greatly reduce the outflow of indoor air, and save more energy.

Parameters

Voltage/Frequency: 220-240V/50Hz, or 110V/60Hz, 110V/50Hz, 220V/60Hz are all available.

| Model | Diameter of Impeller (mm) | Input Power (W) | Air Velocity (m/s) | Air Volume (m³/h)/CFM | Noise (dB) | Net Weight (KG) | Gross Weight (KG) | Unit Size (mm) | Carton Size (mm) | Mounting Height (m) |
|---------------|---------------------------|-----------------|--------------------|-----------------------|------------|-----------------|-------------------|----------------|------------------|---------------------|
| FM-1209X-2(Y) | 120 | 150 | 11.0 | 1780/1047 | ≤43 | 11.5 | 13.0 | 900×215×200 | 960×270×250 | 2.3-3 |
| FM-1210X-2(Y) | 120 | 150 | 11.0 | 1980/1164 | ≤43 | 12.1 | 13.8 | 1000×215×200 | 1060×270×250 | 2.3-3 |
| FM-1212X-2(Y) | 120 | 180 | 11.0 | 2370/1394 | ≤44 | 14.5 | 16.5 | 1200×215×200 | 1260×270×250 | 2.3-3 |
| FM-1215X-2(Y) | 120 | 220 | 11.0 | 2970/1747 | ≤46 | 17.2 | 19.7 | 1500×215×200 | 1560×270×250 | 2.3-3 |
| FM-1218X-2(Y) | 120 | 280 | 11.0 | 3560/2094 | ≤50 | 20.0 | 23.0 | 1800×215×200 | 1860×270×250 | 2.3-3 |
| FM-1220X-2(Y) | 120 | 320 | 11.0 | 3960/2329 | ≤51 | 21.5 | 25.0 | 2000×215×200 | 2060×270×250 | 2.3-3 |



Parameters

Voltage/Frequency: 220-240V/50Hz, or 110V/60Hz, 110V/50Hz, 220V/60Hz are all available.

| Model | Input Power (W) | Air Velocity (m/s) | Air Volume (m³/h)/CFM | Noise (dB) | Net Weight (KG) | Unit Size (mm) | Carton Size (mm) | Mounting Height (m) |
|----------------|-----------------|--------------------|-----------------------|------------|-----------------|----------------|------------------|---------------------|
| FM-1009X3-2(Y) | 100 | 10.5 | 1480/870 | ≤45 | 7.3 | 900×180×140 | 950×235×200 | 2.3-3 |
| FM-1012X3-2(Y) | 125 | 10.5 | 2030/1194 | ≤48 | 9.2 | 1200×180×140 | 1250×235×200 | 2.3-3 |
| FM-1015X3-2(Y) | 150 | 10.5 | 2530/1488 | ≤49 | 11.8 | 1500×180×140 | 1550×235×200 | 2.3-3 |
| FM-1018X3-2(Y) | 220 | 10.5 | 3000/1764 | ≤51 | 14.2 | 1800×180×140 | 1850×235×200 | 2.3-3 |
| FM-1020X3-2(Y) | 210 | 10.5 | 3300/1941 | ≤53 | 15.8 | 2000×180×140 | 2050×235×200 | 2.3-3 |





G3

CROSS FLOW AIR CURTAIN

11cm Air Wheel



- **Fashionable appearance design:** Adopting quadrate hole punching design, making the panel stronger, fashion & elegant.
- **Improved air duct design and wheel design:** adopting 11cm wheel, convenient for assembling, bringing powerful, smooth and even air flow, making a great air curtain effect, and the installing height will be roundly 0.5m higher than competitor.
- **High efficiency motor:** Adopting self-made motor, powerful, low noise, more reliable.
- **Multi-control ways:** With remote control receiver and manual key design, the operation is more convenient, standard two speeds, three speeds for option, which is suitable for a variety of places.
- **Intelligent magnetic door switch (Optional):** Realize humanized control of door opening and closing, greatly reduce indoor air outflow and save energy.
- **Double voltage(For option):** Motor can be optional for 110V/220V, suitable for some area with double voltage like Taiwan, South America.

Parameters

Voltage/Frequency : 220-240V/50Hz, or 110V/60Hz, 110V/50Hz, 220V/60Hz are all available.

| Model | Diameter of Impeller (mm) | Input Power (W) | | Air Velocity (m/s) | | Air Volume (m³/h)/CFM | | Noise (dB) | | Net Weight (KG) | Gross Weight (KG) | Unit Size (mm) | Carton Size (mm) | Mounting Height (m) |
|----------------|---------------------------|-----------------|-------|--------------------|------|-----------------------|-----------|------------|-----|-----------------|-------------------|----------------|------------------|---------------------|
| | | H | L | H | L | H | L | H | L | | | | | |
| FM-1109G3-2(Y) | 110 | 138 | 106.4 | 11.5 | 10.2 | 1500/882 | 1200/706 | ≤65 | ≤60 | 9.8 | 11.2 | 900x203x170 | 955x255x215 | 2.3-3 |
| FM-1112G3-2(Y) | 110 | 166 | 124.8 | 11.1 | 9.7 | 1900/1117 | 1700/1000 | ≤65 | ≤60 | 12.3 | 14.6 | 1200x203x170 | 1255x255x215 | 2.3-3 |
| FM-1115G3-2(Y) | 110 | 210 | 180 | 10.8 | 10 | 2500/1470 | 2200/1176 | ≤65 | ≤60 | 14.5 | 16.4 | 1500x203x170 | 1555x255x215 | 2.3-3 |



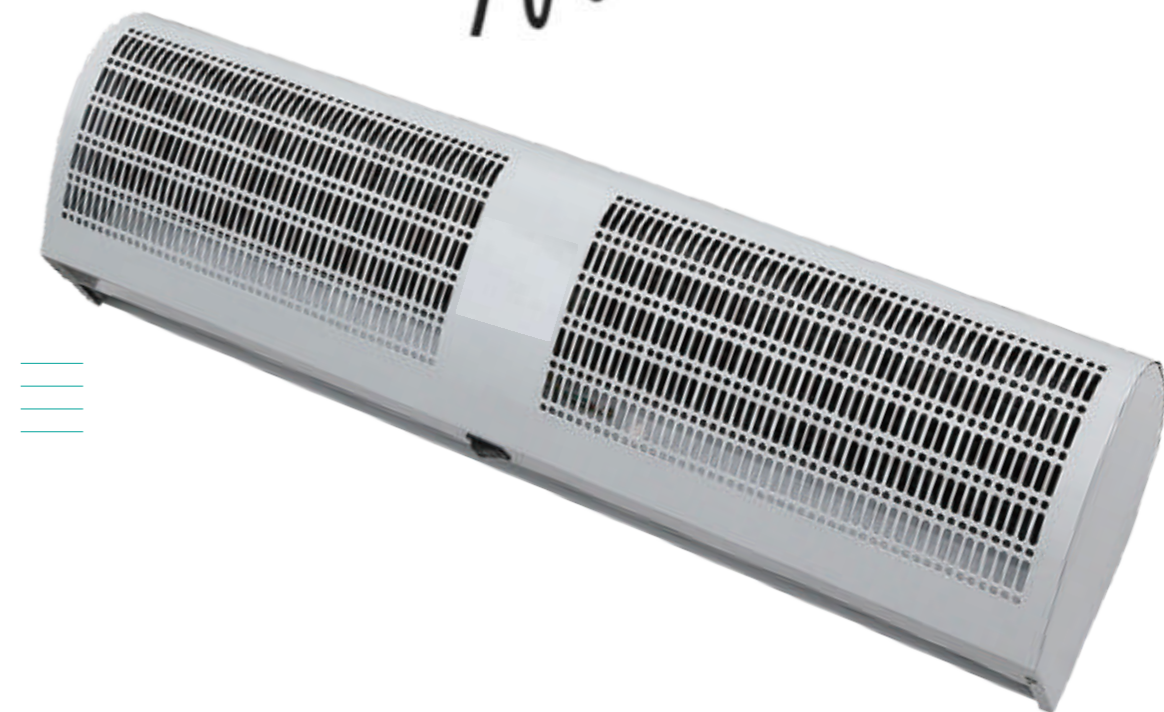
P CROSS FLOW AIR CURTAIN

- **Luxurious appearance design:** using aluminum alloy panel with plastic air inlet grille, high-end and fashionable.
- **Unique air duct design:** powerful, stable and even air flow and more significant air curtain effect;
- **High-efficiency motor:** use self-developed and self-produced motors, all copper wire motors with NSK bearings to ensure stable output of motor performance.
- **Multi control modes:** adopt remote control and manual button mode, the operation is more convenient, standard 2-speed wind speed, can be Choose 3 gears of wind speed, suitable for use in a variety of places.
- **Intelligent magnetic door switch (optional):** realize the humanized control of door opening and closing, greatly reduce the outflow of indoor air, and save more energy.



A CROSS FLOW AIR CURTAIN

- **Aesthetic arc panel design:** flow panel design, adopting hexagonal holes & rounded rectangle punching, larger air inlet and stronger panel rigidity.
- **Integrated air duct design:** the air outlet is stable, the air speed decays slowly, and the air curtain effect is more significant;
- **High-efficiency motor:** using independent R&D and self-produced motor, strong power, low noise and reliable performance;
- **Multi control modes:** adopt remote control and manual button mode, the operation is more convenient, standard 2-speed wind speed, can be 3 speeds for option, suitable for use in a variety of places;
- **Intelligent magnetic door switch (optional):** realize the humanized control of door opening and closing, greatly reduce the outflow of indoor air, and save more energy.



Parameters

Voltage/Frequency: 220-240V/50Hz, or 110V/60Hz, 110V/50Hz, 220V/60Hz are all available.

| Model | Diameter of Impeller (mm) | Input Power (W) | Air Velocity (m/s) | Air Volume (m³/h)/CFM | Noise (dB) | Net Weight (KG) | Gross Weight (KG) | Unit Size (mm) | Carton Size (mm) | Mounting Height (m) |
|---------------|---------------------------|-----------------|--------------------|-----------------------|------------|-----------------|-------------------|----------------|------------------|---------------------|
| FM-1209P-2(Y) | 120 | 150 | 11.0 | 1780/1047 | ≤52 | 11.5 | 12.5 | 900×220×200 | 955×270×255 | 2.3-3 |
| FM-1210P-2(Y) | 120 | 180 | 11.0 | 1980/1164 | ≤52 | 12.3 | 13.5 | 1000×220×200 | 1055×270×255 | 2.3-3 |
| FM-1212P-2(Y) | 120 | 180 | 11.0 | 2370/1394 | ≤54 | 14.3 | 15.8 | 1200×220×200 | 1255×270×255 | 2.3-3 |
| FM-1215P-2(Y) | 120 | 220 | 11.0 | 2970/1747 | ≤55 | 16.8 | 18.8 | 1500×220×200 | 1555×270×255 | 2.3-3 |

Back diagram



Front view



Parameters

Voltage/Frequency: 220-240V/50Hz, or 110V/60Hz, 110V/50Hz, 220V/60Hz are all available.

| Model | Diameter of Impeller (mm) | Input Power (W) | Air Velocity (m/s) | Air Volume (m³/h)/CFM | Noise (dB) | Net Weight (KG) | Gross Weight (KG) | Unit Size (mm) | Carton Size (mm) | Mounting Height (m) |
|---------------|---------------------------|-----------------|--------------------|-----------------------|------------|-----------------|-------------------|----------------|------------------|---------------------|
| FM-1209A-2(Y) | 120 | 150 | 11.0 | 1780/1047 | ≤45 | 10.2 | 12.5 | 900×220×195 | 940×265×220 | 2.3-3 |
| FM-1210A-2(Y) | 120 | 150 | 11.0 | 1980/1164 | ≤46 | 12.3 | 13.8 | 1000×220×195 | 1040×265×220 | 2.3-3 |
| FM-1212A-2(Y) | 120 | 180 | 11.0 | 2370/1394 | ≤48 | 13.7 | 15.5 | 1200×220×195 | 1240×265×220 | 2.3-3 |
| FM-1215A-2(Y) | 120 | 250 | 11.0 | 2970/1747 | ≤49 | 16.3 | 18.5 | 1500×220×195 | 1540×265×220 | 2.3-3 |



PLASTIC AIR CURTAIN

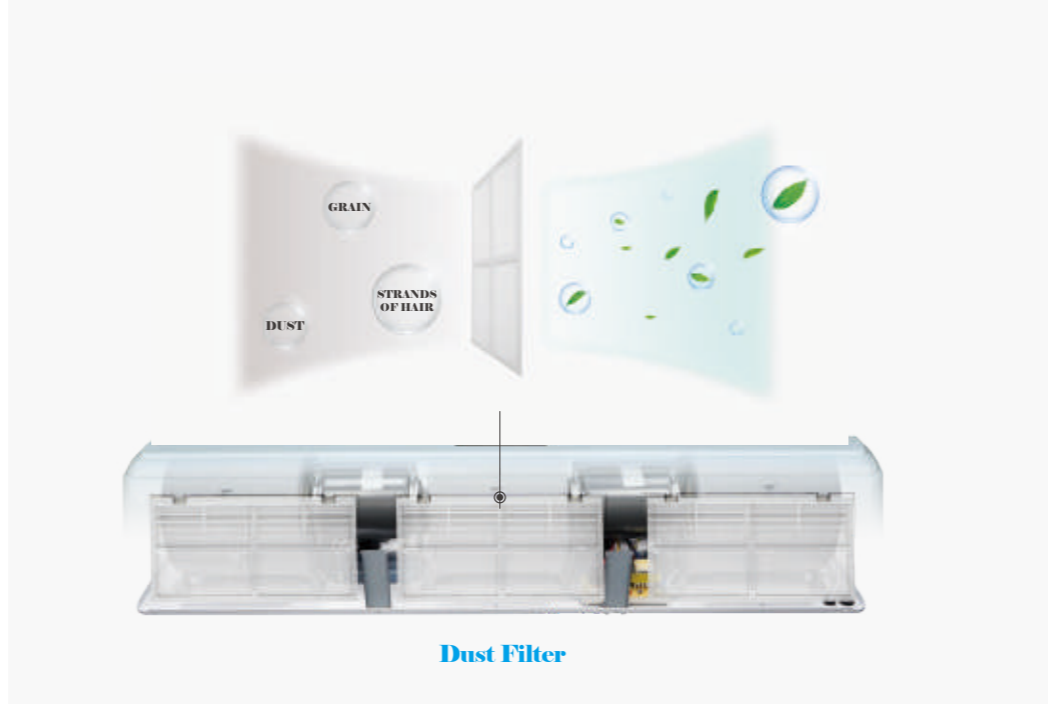


- **Full plastic appearance design:** Adopt exclusive open-molded full-plastic appearance, high-end and fashionable. the model series is rich and range from 0.9-1.5 meters into a series, better than the others.
- **Unique integrated upper air inlet design:**the disassembled grille air inlet plate structure is convenient for product cleaning and maintenance, the centrifugal air duct design, high air pressure, large air volume, stable and uniform air outlet, and more significant air curtain effect.
- **High-efficiency motor:** use self-developed and self-produced motors, all copper wire motors with NSK bearings to ensure stable output of motor performance.

Parameters

| Model | Input Power (W) | | | Air Volume (m³/h)/CFM | | | Air Velocity (m/s) | | | Noise (dB) | | | Net Weight (KG) | Gross Weight (KG) | Unit Size (mm) | Carton Size (mm) | Mounting Height (m) |
|-------------------|-----------------|-----|-----|-----------------------|-----------|----------|--------------------|------|------|------------|-----|-----|-----------------|-------------------|----------------|------------------|---------------------|
| | H | M | L | H | M | L | H | M | L | H | M | L | | | | | |
| FM-3509QS-L(Y)(X) | 200 | 180 | 150 | 1080/635 | 996/586 | 870/512 | 15.5 | 14.3 | 12.5 | ≤44 | ≤42 | ≤41 | 13.5 | 15 | 900x230x220 | 960x290x270 | 3-3.5 |
| FM-3512QS-L(Y)(X) | 250 | 225 | 185 | 1450/853 | 1337/786 | 1168/687 | 15.5 | 14.3 | 12.5 | ≤45 | ≤43 | ≤42 | 15.5 | 17.5 | 1200x230x220 | 1260x290x270 | 3-3.5 |
| FM-3515QS-L(Y)(X) | 325 | 290 | 240 | 1800/1059 | 1600/941 | 1398/822 | 15.5 | 14.3 | 12.5 | ≤48 | ≤46 | ≤44 | 20.5 | 23 | 1500x230x220 | 1560x290x270 | 3-3.5 |
| FM-4509QS-L(Y)(X) | 350 | 260 | 200 | 1320/776 | 1100/647 | 860/506 | 19 | 16 | 12.5 | ≤46 | ≤44 | ≤42 | 14 | 15.5 | 900x230x220 | 960x290x270 | 4-4.5 |
| FM-4512QS-L(Y)(X) | 440 | 320 | 225 | 1770/1041 | 1455/856 | 1150/676 | 19 | 16 | 12.5 | ≤47 | ≤45 | ≤43 | 16 | 18 | 1200x230x220 | 1260x290x270 | 4-4.5 |
| FM-4515QS-L(Y)(X) | 575 | 435 | 330 | 2200/1294 | 1850/1088 | 1450/853 | 19 | 16 | 12.5 | ≤50 | ≤47 | ≤45 | 21 | 23.5 | 1500x230x220 | 1560x290x270 | 4-4.5 |
| FM-5509QS-L(Y)(X) | 440 | 325 | 250 | 1520/894 | 1270/747 | 1000/588 | 22 | 18.5 | 14.5 | ≤52 | ≤50 | ≤47 | 14.5 | 16 | 900x230x220 | 960x290x270 | 5-5.5 |
| FM-5512QS-L(Y)(X) | 530 | 385 | 270 | 2027/1192 | 1670/1044 | 1330/782 | 22 | 18.5 | 14.5 | ≤54 | ≤52 | ≤50 | 16.5 | 18.5 | 1200x230x220 | 1260x290x270 | 5-5.5 |
| FM-5515QS-L(Y)(X) | 710 | 535 | 405 | 2543/1496 | 2135/1256 | 1680/988 | 22 | 18.5 | 14.5 | ≤55 | ≤53 | ≤51 | 21.5 | 24 | 1500x230x220 | 1560x290x270 | 5-5.5 |

Voltage/Frequency: 220-240V/50Hz, or 110V/60Hz, 110V/50Hz, 220V/60Hz are all available.



Dust Filter

- **Remote and manual integrated control:** more convenient operation, standard 3-speed, suitable for use in more places.
- **Intelligent door magnetic switch (optional):** realize the humanized control of door opening and closing, greatly reduce the outflow of indoor air, and save more energy.
- Can be equipped with air inlet filter.



CENTRIFUGAL FLOW AIR CURTAIN

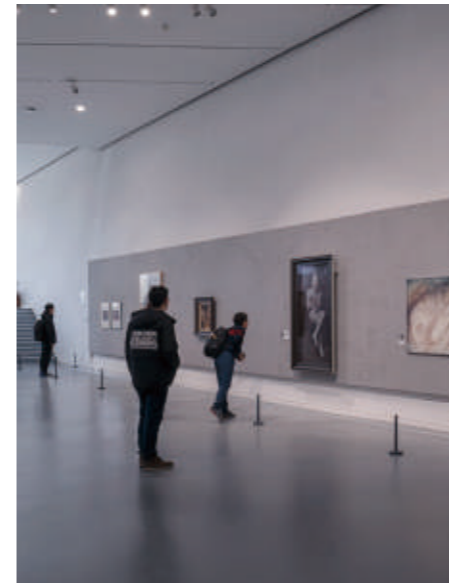


- **Luxurious appearance design:** adopts a full panel aluminum alloy design, which is high-end and fashionable. The panel is flat and easy to clean;
- **Unique centrifugal air duct design:** strong air flow, stable and even air outlet, and more significant air curtain effect;
- **High-efficiency motor + U-shaped motor bracket and special anti-vibration rubber:** using self-produced motor, strong power, with U-shaped motor bracket and special anti-vibration rubber, low noise and reliable performance;
- **Multi control modes:** adopt remote control and manual button mode, the operation is more convenient, standard 2-speed wind speed, can be 3 speeds for option, suitable for use in a variety of places.
- **Intelligent magnetic door switch (optional):** realize the humanized control of door opening and closing, greatly reduce the outflow of indoor air, and save more energy.

Parameters

Voltage/Frequency: 220-240V/50Hz, or 110V/60Hz, 110V/50Hz, 220V/60Hz are all available.

| Model | Diameter of Impeller (mm) | Input Power (W) | Air Velocity (m/s) | Air Volume (m³/h)/CFM | Noise (dB) | Net Weight (KG) | Gross Weight (KG) | Unit Size (mm) | Carton Size (mm) | Mounting Height (m) |
|------------------|---------------------------|-----------------|--------------------|-----------------------|------------|-----------------|-------------------|----------------|------------------|---------------------|
| FM-3509Z(L)-L(Y) | 120 | 200 | 14.5 | 1020/600 | ≤44 | 15.0 | 16.5 | 900x230x215 | 960x290x280 | 3-3.5 |
| FM-3510Z(L)-L(Y) | 120 | 200 | 14.5 | 1020/600 | ≤44 | 15.5 | 17.2 | 1000x230x215 | 1060x290x280 | 3-3.5 |
| FM-3512Z(L)-L(Y) | 120 | 240 | 14.5 | 1360/800 | ≤45 | 16.0 | 18.0 | 1200x230x215 | 1260x290x280 | 3-3.5 |
| FM-3515Z(L)-L(Y) | 120 | 320 | 14.5 | 1700/1000 | ≤48 | 21.5 | 24.0 | 1500x230x215 | 1560x290x280 | 3-3.5 |
| FM-3518Z(L)-L(Y) | 120 | 360 | 14.5 | 2040/1200 | ≤50 | 23.0 | 26.0 | 1800x230x215 | 1860x290x280 | 3-3.5 |
| FM-3520Z(L)-L(Y) | 120 | 360 | 14.5 | 2040/1200 | ≤50 | 25.0 | 28.5 | 2000x230x215 | 2060x290x280 | 3-3.5 |
| FM-4509Z(L)-L(Y) | 120 | 280 | 18.0 | 1260/741 | ≤46 | 15.5 | 17.0 | 900x230x215 | 960x290x280 | 4-4.5 |
| FM-4510Z(L)-L(Y) | 120 | 280 | 18.0 | 1260/741 | ≤46 | 16.0 | 17.7 | 1000x230x215 | 1060x290x280 | 4-4.5 |
| FM-4512Z(L)-L(Y) | 120 | 360 | 18.0 | 1680/988 | ≤47 | 16.5 | 18.5 | 1200x230x215 | 1260x290x280 | 4-4.5 |
| FM-4515Z(L)-L(Y) | 120 | 450 | 18.0 | 2100/1235 | ≤50 | 22.5 | 25.0 | 1500x230x215 | 1560x290x280 | 4-4.5 |
| FM-4518Z(L)-L(Y) | 120 | 550 | 18.0 | 2520/1482 | ≤52 | 23.5 | 26.5 | 1800x230x215 | 1860x290x280 | 4-4.5 |
| FM-4520Z(L)-L(Y) | 120 | 550 | 18.0 | 2520/1482 | ≤52 | 25.5 | 29.0 | 2000x230x215 | 2060x290x280 | 4-4.5 |
| FM-5509Z(L)-L(Y) | 120 | 420 | 20.0 | 1450/853 | ≤48 | 16.0 | 17.5 | 900x230x215 | 960x290x280 | 5-5.5 |
| FM-5510Z(L)-L(Y) | 120 | 420 | 20.0 | 1450/853 | ≤48 | 16.3 | 18.0 | 1000x230x215 | 1060x290x280 | 5-5.5 |
| FM-5512Z(L)-L(Y) | 120 | 560 | 20.0 | 1930/1135 | ≤49 | 16.8 | 18.8 | 1200x230x215 | 1260x290x280 | 5-5.5 |
| FM-5515Z(L)-L(Y) | 120 | 700 | 20.0 | 2420/1424 | ≤52 | 22.5 | 25.0 | 1500x230x215 | 1560x290x280 | 5-5.5 |
| FM-5518Z(L)-L(Y) | 120 | 800 | 20.0 | 2900/1706 | ≤54 | 24.5 | 27.5 | 1800x230x215 | 1860x290x280 | 5-5.5 |
| FM-5520Z(L)-L(Y) | 120 | 800 | 20.0 | 2900/1706 | ≤54 | 26.5 | 30.0 | 2000x230x215 | 2060x290x280 | 5-5.5 |





S CENTRIFUGAL FLOW AIR CURTAIN

- **Integrated appearance design:** the curved full-sealed panel design is fashionable and clean, and the panel rigidity is stronger;
- **Unique upper air inlet design:** the panel is easy to clean, the whole machine has a compact structure, the loss of air volume is small, the air outlet is stable and even, and the effect of the air curtain is more remarkable.
- **High-efficiency motor:** use self-developed and self-produced motor, coupled with low-noise, high-speed centrifugal volute, strong power, low noise, and reliable performance
- **Multi control modes:** adopt remote control and manual button mode, the operation is more convenient, standard 2-speed wind speed, can be 3 speeds for option, suitable for use in a variety of places.
- **Intelligent magnetic door switch (optional):** realize the humanized control of door opening and closing, greatly reduce the outflow of indoor air, and save more energy
- Can be equipped with air inlet filter.



H CENTRIFUGAL FLOW AIR CURTAIN

- **Unique square appearance design:** square appearance hardcore design, fashionable and clean, Optional stainless steel body material outstands the high-end fashion.
- **Unique upper air intake design:** the panel is flat and easy to clean, the whole machine has a compact structure, the loss of air volume is small, the air outlet is stable and even, and the effect of the air curtain is more remarkable.
- **High-efficiency motor:** use self-developed and self-produced motors, all copper wire motors with NSK bearings to ensure stable output of motor performance.
- **Multi control modes:** adopt remote control and manual button mode, the operation is more convenient, standard 2-speed wind speed, can be 3 speeds for option, suitable for use in a variety of places.
- **Intelligent magnetic door switch (optional):** realize the humanized control of door opening and closing, greatly reduce the outflow of indoor air, and save more energy.
- Stainless Steel model body for option.



Parameters

Voltage/Frequency: 220-240V/50Hz, or 110V/60Hz, 110V/50Hz, 220V/60Hz are all available.

| Model | Diameter of Impeller (mm) | Input Power (W) | Air Velocity (m/s) | Air Volume (m³/h)/CFM | Noise (dB) | Net Weight (KG) | Gross Weight (KG) | Unit Size (mm) | Carton Size (mm) | Mounting Height (m) |
|---------------|---------------------------|-----------------|--------------------|-----------------------|------------|-----------------|-------------------|----------------|------------------|---------------------|
| FM-3509S-L(Y) | 120 | 220 | 14.5 | 1020/600 | ≤44 | 16.0 | 17.5 | 900×230×212 | 960×290×270 | 3-3.5 |
| FM-3512S-L(Y) | 120 | 275 | 14.5 | 1360/800 | ≤45 | 19.0 | 21.0 | 1200×230×212 | 1260×290×270 | 3-3.5 |
| FM-3515S-L(Y) | 120 | 330 | 14.5 | 1700/1000 | ≤48 | 25.0 | 27.5 | 1500×230×212 | 1560×290×270 | 3-3.5 |
| FM-3518S-L(Y) | 120 | 410 | 14.5 | 2040/1200 | ≤51 | 30.0 | 33.0 | 1800×230×212 | 1860×290×270 | 3-3.5 |
| FM-4509S-L(Y) | 120 | 310 | 18.0 | 1260/740 | ≤46 | 16.5 | 18.0 | 900×230×212 | 960×290×270 | 4-4.5 |
| FM-4512S-L(Y) | 120 | 400 | 18.0 | 1680/988 | ≤47 | 21.0 | 23.0 | 1200×230×212 | 1260×290×270 | 4-4.5 |
| FM-4515S-L(Y) | 120 | 510 | 18.0 | 2100/1235 | ≤50 | 26.0 | 29.5 | 1500×230×212 | 1560×290×270 | 4-4.5 |
| FM-4518S-L(Y) | 120 | 600 | 18.0 | 2520/1482 | ≤54 | 30.5 | 33.5 | 1800×230×212 | 1860×290×270 | 4-4.5 |
| FM-5509S-L(Y) | 120 | 410 | 21.0 | 1520/894 | ≤52 | 17.5 | 19.0 | 900×230×212 | 960×290×270 | 5-5.5 |
| FM-5512S-L(Y) | 120 | 560 | 21.0 | 2027/1192 | ≤54 | 21.5 | 23.5 | 1200×230×212 | 1260×290×270 | 5-5.5 |
| FM-5515S-L(Y) | 120 | 700 | 21.0 | 2543/1496 | ≤55 | 27.0 | 29.5 | 1500×230×212 | 1560×290×270 | 5-5.5 |
| FM-5518S-L(Y) | 120 | 820 | 21.0 | 3040/1788 | ≤58 | 31.0 | 34.0 | 1800×230×212 | 1860×290×270 | 5-5.5 |



Parameters

Voltage/Frequency: 220-240V/50Hz, or 110V/60Hz, 110V/50Hz, 220V/60Hz are all available.

| Model | Diameter of Impeller (mm) | Input Power (W) | Air Velocity (m/s) | Air Volume (m³/h)/CFM | Noise (dB) | Net Weight (KG) | Gross Weight (KG) | Unit Size (mm) | Carton Size (mm) | Mounting height (mm) |
|-----------------------|---------------------------|-----------------|--------------------|-----------------------|------------|-----------------|-------------------|----------------|------------------|----------------------|
| FM-3509H(B)-L(Y)(-MC) | 120 | 230 | 14.5 | 1020/600 | ≤44 | 15.5 | 17 | 900×235×215 | 990X295X290 | 3.0-3.5 |
| FM-3510H(B)-L(Y)(-MC) | 120 | 230 | 14.5 | 1020/600 | ≤44 | 17 | 18.7 | 1000×235×215 | 1090X295X290 | 3.0-3.5 |
| FM-3512H(B)-L(Y)(-MC) | 120 | 305 | 14.5 | 1360/800 | ≤45 | 21.5 | 23.5 | 1200×235×215 | 1290X295X290 | 3.0-3.5 |
| FM-3515H(B)-L(Y)(-MC) | 120 | 385 | 14.5 | 1700/1000 | ≤48 | 26.5 | 29 | 1500×235×215 | 1590X295X290 | 3.0-3.5 |
| FM-3518H(B)-L(Y)(-MC) | 120 | 460 | 14.5 | 2040/1200 | ≤50 | 31.5 | 34.5 | 1800×235×215 | 1890X295X290 | 3.0-3.5 |
| FM-3520H(B)-L(Y)(-MC) | 120 | 460 | 14.5 | 2040/1200 | ≤50 | 33.5 | 37.3 | 2000×235×215 | 2090X295X290 | 3.0-3.5 |
| FM-4509H(B)-L(Y)(-MC) | 120 | 330 | 18 | 1260/741 | ≤46 | 16.1 | 17.6 | 900×235×215 | 955X295X290 | 4.0-4.5 |
| FM-4510H(B)-L(Y)(-MC) | 120 | 330 | 18 | 1260/741 | ≤46 | 17.5 | 19.2 | 1000×235×215 | 1055X295X290 | 4.0-4.5 |
| FM-4512H(B)-L(Y)(-MC) | 120 | 420 | 18 | 1680/988 | ≤47 | 22.5 | 24.5 | 1200×235×215 | 1255X295X290 | 4.0-4.5 |
| FM-4515H(B)-L(Y)(-MC) | 120 | 545 | 18 | 2100/1235 | ≤50 | 27.5 | 30 | 1500×235×215 | 1555X295X290 | 4.0-4.5 |
| FM-4518H(B)-L(Y)(-MC) | 120 | 635 | 18 | 2520/1482 | ≤52 | 32.5 | 35.5 | 1800×235×215 | 1855X295X290 | 4.0-4.5 |
| FM-4520H(B)-L(Y)(-MC) | 120 | 635 | 18 | 2520/1482 | ≤52 | 34.8 | 38.6 | 2000×235×215 | 2055X295X290 | 4.0-4.5 |
| FM-5509H(B)-L(Y)(-MC) | 120 | 440 | 21 | 1450/853 | ≤48 | 16.8 | 18.3 | 900×235×215 | 955X295X290 | 5.0-5.5 |
| FM-5510H(B)-L(Y)(-MC) | 120 | 440 | 21 | 1450/853 | ≤48 | 18.5 | 20.2 | 1000×235×215 | 1055X295X290 | 5.0-5.5 |
| FM-5512H(B)-L(Y)(-MC) | 120 | 550 | 21 | 1930/1135 | ≤49 | 23.5 | 25.5 | 1200×235×215 | 1255X295X290 | 5.0-5.5 |
| FM-5515H(B)-L(Y)(-MC) | 120 | 780 | 21 | 2420/1423 | ≤52 | 27.5 | 30 | 1500×235×215 | 1555X295X290 | 5.0-5.5 |
| FM-5518H(B)-L(Y)(-MC) | 120 | 830 | 21 | 2900/1706 | ≤54 | 33.5 | 36.5 | 1800×235×215 | 1855X295X290 | 5.0-5.5 |
| FM-5520H(B)-L(Y)(-MC) | 120 | 830 | 21 | 2900/1706 | ≤54 | 35.8 | 39.6 | 2000×235×215 | 2055X295X290 | 5.0-5.5 |

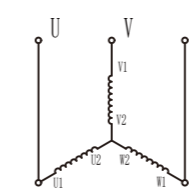


36.5m / s

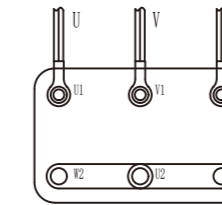
Large Air Volume Industrial Air Curtain (Centrifugal Type)

- **Integrated appearance design:** the panel and the air outlet are integrally designed, simple and elegant,
- **Unique air inlet and outlet design:** The structure design of three air deflectors ensures that the air outlet is more uniform and stable. and the wind speed can reach 35m/s;
- **High-efficiency motor:** The high-power and high-efficiency 3-phase motor is equipped with a high-speed centrifugal volute, which has strong power, high wind speed and large air volume, which is suitable for higher requirements.
- **Flexible switching of various voltages:** The 3 groups of motor lead wires can be flexibly adjusted for different wiring methods to meet the use of different voltages such as 3-phase 380V/220V.

3 Phase 380V

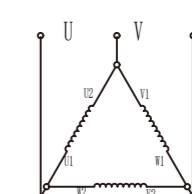


Schematic Diagram

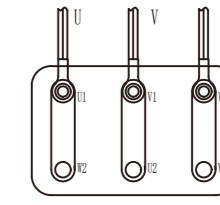


Wiring Diagram

3 Phase 220V



Schematic Diagram



Wiring Diagram

Dual voltages universal

Parameters

110V/60Hz, 110V/50Hz, 220V/60Hz are all available.

| Model | Voltage (V) | Frequency (Hz) | Input Power (W) | Air Velocity (m/s) | Air Volume (m³/h)/CFM | Noise (dB) | Net Weight (KG) | Gross Weight (KG) | Unit Size (mm) | Mounting Height (m) |
|-----------|-------------|----------------|-----------------|--------------------|-----------------------|------------|-----------------|-------------------|----------------|---------------------|
| FM-8009GY | 380 | 60 | 1564 | 36.5 | 10000/5882 | ≤86 | 35 | 38 | 900*300*320 | 8 |
| FM-8009GY | 220 | 60 | 1680 | 36.5 | 10000/5882 | ≤86 | 35 | 38 | 900*300*320 | 8 |



INDUSTRIAL AIR CURTAIN- CENTRIFUGAL TYPE

- Metal housing for fire resistance.
- Powder coating for rust free.
- New ventilating air duct gives a high pressure, and mouthing height up to 6-8 meters.



Parameters

110V/60Hz, 110V/50Hz, 220V/60Hz are all available.

| Model | Voltage/ Frequency (V/Hz) | Diameter of Impeller (mm) | Input Power (W) | Air Velocity (m/s) | Air Volume (m³/h)/CFM | Noise (dB) | Net Weight (KG) | Gross Weight (KG) | Unit Size (mm) | Carton Size (mm) | Mounting Height (m) |
|-----------|---------------------------------|---------------------------------|-----------------------|--------------------------|-----------------------------|---------------|-----------------------|-------------------------|----------------------|------------------------|---------------------------|
| FM-6009GY | 220-240/50 | 160 | 800 | 21.0 | 3500/2059 | ≤63 | 42.0 | 44.0 | 914×345×351 | 988×410×417 | 6-7 |
| FM-6012GY | 220-240/50 | 160 | 1200 | 21.0 | 4650/2735 | ≤65 | 47.5 | 50.0 | 1218×345×351 | 1292×410×417 | 6-7 |
| FM-6015GY | 220-240/50 | 160 | 1600 | 21.0 | 5700/3353 | ≤66 | 58.0 | 62.0 | 1523×345×351 | 1597×410×417 | 6-7 |
| FM-6009GY | 380/50 | 160 | 1100 | 24.0 | 3750/2206 | ≤65 | 42.0 | 44.0 | 914×345×351 | 988×410×417 | 6-8 |
| FM-6012GY | 380/50 | 160 | 1600 | 24.0 | 5000/2941 | ≤66 | 47.5 | 50.5 | 1218×345×351 | 1292×410×417 | 6-8 |
| FM-6015GY | 380/50 | 160 | 2200 | 24.0 | 6250/3677 | ≤68 | 58.0 | 62.0 | 1523×345×351 | 1597×410×417 | 6-8 |



CB CE

COLD ROOM AIR CURTAIN

- Blower driving by external rotator motor, running.
- Higher air pressure.
- Cylinder type air outlet, stable and uniform air supply
- Whole machine spraying antirust processing.

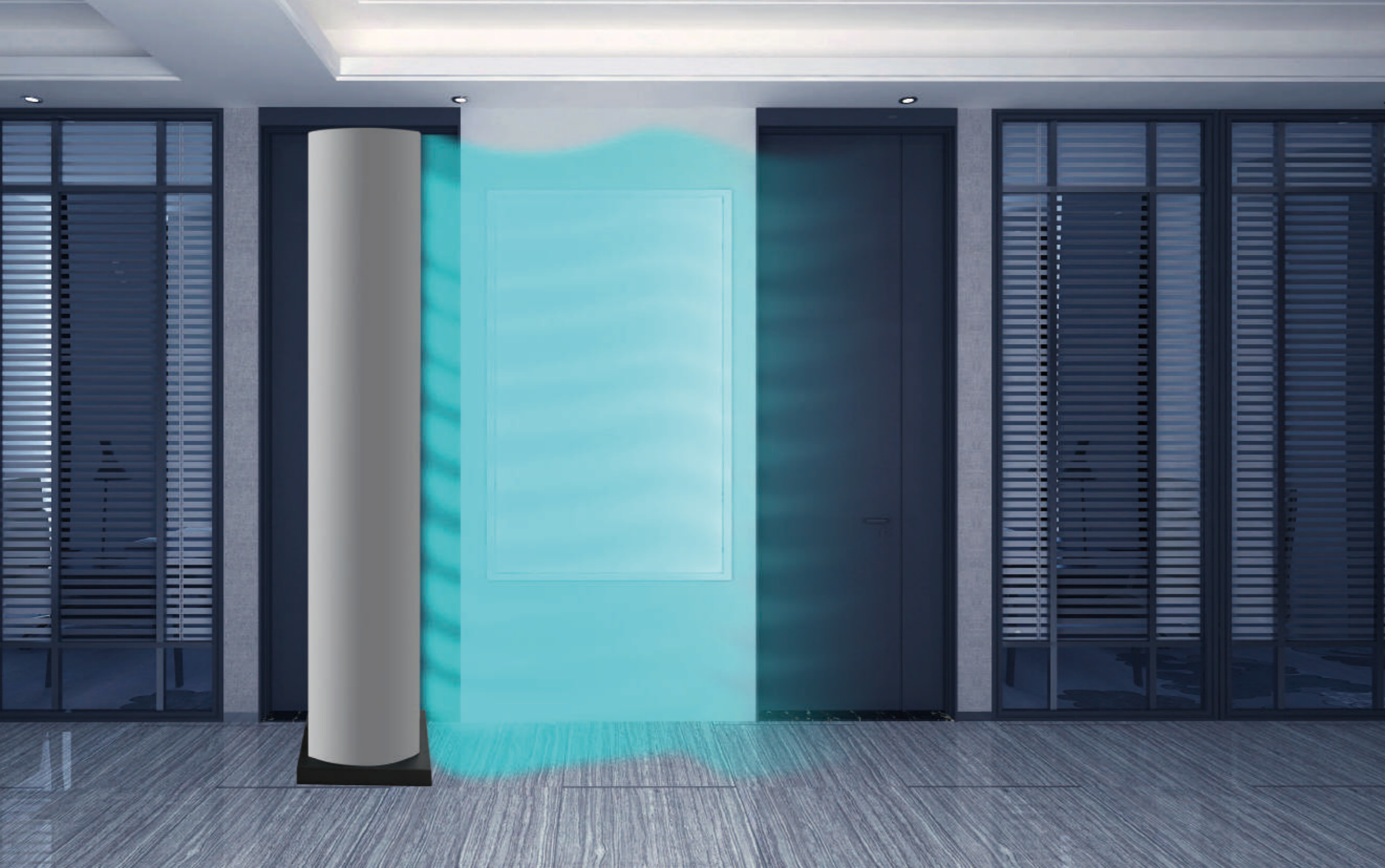


Parameters

110V/60Hz, 110V/50Hz, 220V/60Hz are all available.

| Model | Voltage (V) | Frequency (Hz) | Diameter of Impeller (mm) | Input Power (W) | Air Velocity (m/s) | Air Volume (m³/h)/CFM | Noise (dB) | Net Weight (KG) | Gross Weight (KG) | Unit Size (mm) | Mounting Height (m) |
|------------|----------------|-------------------|---------------------------------|-----------------------|--------------------------|-----------------------------|---------------|-----------------------|-------------------------|----------------------|---------------------------|
| FM-2515LKM | 220/240/380 | 50 | Φ250 | 550 | 20 | 3200/1882 | ≤72 | 32 | 40 | 1906×406×424 | 2.5-3 |
| FM-2518LKM | 220/240/380 | 50 | Φ250 | 750 | 20 | 3800/2235 | ≤74 | 34 | 42 | 2206×406×424 | 2.5-3 |
| FM-2520LKM | 220/240/380 | 50 | Φ250 | 750 | 20 | 4300/2529 | ≤75 | 37 | 44 | 2406×406×424 | 2.5-3 |





VERTICAL AIR CURTAIN
LUXURY DESIGN

- Full metal housing, curved surface appearance, elegant design;
- Axial flow multi-fan structure, stable operation and large air volume;
- No installation required, can be floor standing, suitable for places that cannot be installed on the wall.



Parameters

| Model | Voltage (V) | Frequency (Hz) | Input Power (W) | Air Velocity (m/s) | Air Volume (m³/h)/CFM | Unit Size (mm) |
|-----------|-------------|----------------|-----------------|--------------------|-----------------------|----------------|
| FM-CC2000 | 220 | 50 | 580 | 5-12 | 3300/1941 | 400x400x2050 |



STANDING HEATER



WARM AND COMFORTABLE EXPERIENCE

- Cylindrical design, high-grade luxury.
- High quality PTC heater with efficient heating.
- Three wind speed and three heating level which can be adjusted.
- Anion air purification function.
- Overheat protection / dump automatic power-off protection.
- Fault alarm function.
- 24-hour on/off appointment time.



LCD CONTROLLER



Parameters

| Model | Voltage/ Frequency (V/Hz) | Maximum Heating Power (W) | Air Velocity (m/s) | Power Cable Spec (mm ²) | Noise (dB) | Net Weight (KG) | Unit Size (mm) | Mounting Height (m ²) |
|--------------|---------------------------------|---------------------------------|--------------------------|---|---------------|-----------------------|----------------------|---|
| NFJ-6GS-D/Y | 220/50 | 6000 | 3.5 | 6 | < 43 | 28.7 | 380*380*1650 | 20~25 |
| NFJ-6GS-3D/Y | 380/50 | 6000 | 3.5 | 4 | < 43 | 28.7 | 380*380*1650 | 20~25 |
| NFJ-9GS-D/Y | 380/50 | 9000 | 3.5 | 4 | < 43 | 28.7 | 380*380*1650 | 35~40 |
| NFJ-13GS-D/Y | 380/50 | 13000 | 3.5 | 4 | < 43 | 28.7 | 380*380*1650 | 50~60 |



F HEATER TUBE AIR CURTAIN

LUXURY DESIGN

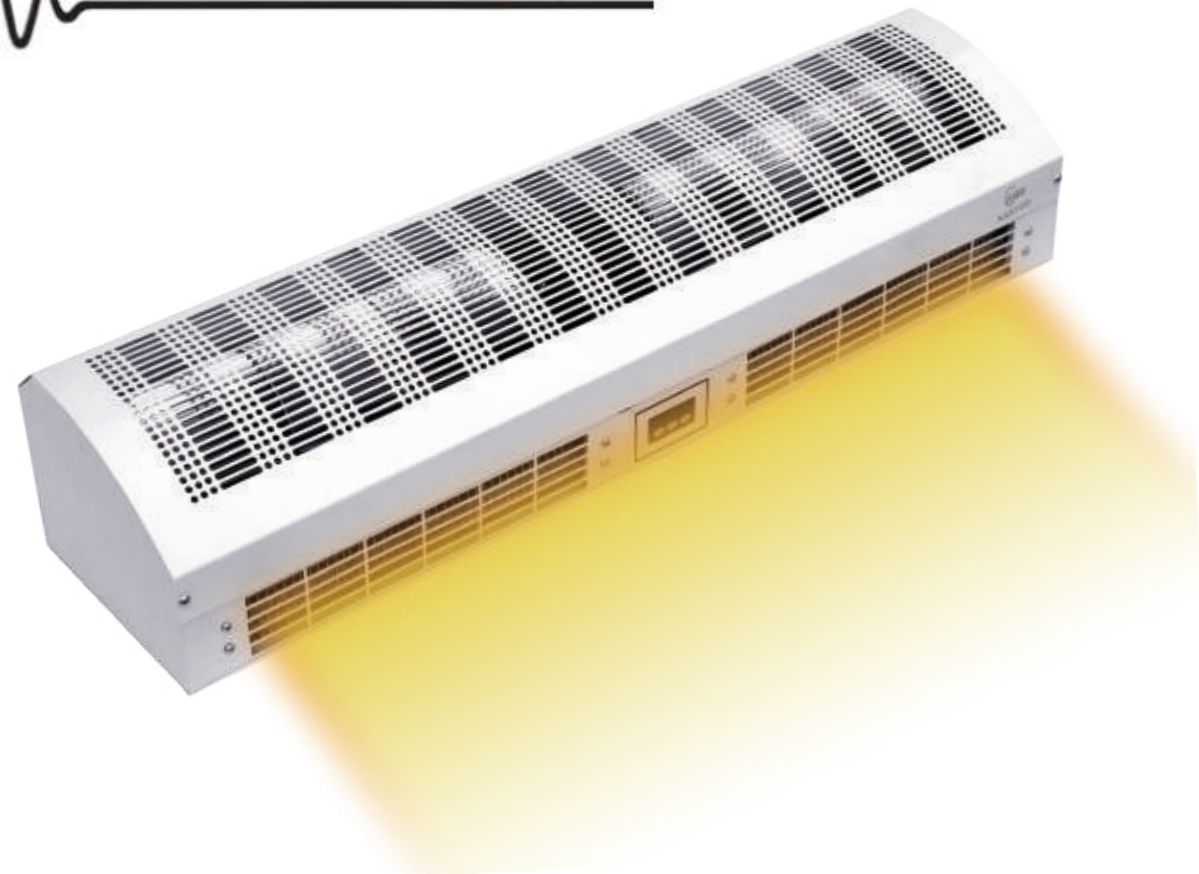
- **L-shaped appearance design:** L-shaped appearance structure design, unique appearance, mesh-shaped air inlet grille, simple and elegant.
- **Upper air inlet heating tube heating design:** The air inlet heating structure is adopted, which has high heat conduction efficiency and small air resistance. And use high-quality heater tube heating, high heating power, safe and stable performance.
- **High-efficiency motor:** use self-developed and self-produced motors, all copper wire motors with NSK bearings to ensure stable output of motor performance.
- **Optimized air duct design:** professional air duct design, strong wind, stable and uniform air outlet, remarkable air curtain effect, and the installation height can reach 3~3.5m. Use aluminum impellers to ensure product life.
- **Multiple safety control protection measures:** The whole machine is equipped with resettable thermostat and one-time thermostat at the same time to improve the safety performance of the whole machine.
- **Multi control modes:** configure remote control and manual touchpad control, two levels of wind speed and two levels of heat are optional.



Parameters

| Model | Voltage/ Frequency (V/Hz) | Input Power (W) | | Motor Speed (r/min) | | Air Velocity (m/s) | | Net Weight (KG) | Gross Weight (KG) | Unit Size (mm) | Carton Size (mm) | Mounting Height (m) |
|-----------------|---------------------------------|--------------------|-------|------------------------|------|-----------------------|------|--------------------|----------------------|-------------------|---------------------|------------------------|
| | | H | L | H | L | H | L | | | | | |
| | | | | | | | | 17.33 | 19.73 | 900*234*266 | 952*330*285 | 2.5-3 |
| RM-1209D-F2/2Y4 | 220/50 | 124 | 88.7 | 1284 | 1125 | 11 | 9.4 | 17.33 | 19.73 | 900*234*266 | 952*330*285 | 2.5-3 |
| RM-1209D-F2/2Y4 | 230/50 | 132 | 90.2 | 1333 | 1204 | 11.7 | 10.1 | 17.33 | 19.73 | 900*234*266 | 952*330*285 | 2.5-3 |
| RM-1209D-F2/2Y4 | 240/50 | 144.4 | 97 | 1309 | 1176 | 11.5 | 10.5 | 17.33 | 19.73 | 900*234*266 | 952*330*285 | 2.5-3 |
| RM-1209D-F2/2Y4 | 220/60 | 152.8 | 105.8 | 1389 | 1111 | 11.8 | 9.5 | 17.33 | 19.73 | 900*234*266 | 952*330*285 | 2.5-3 |
| RM-1209D-F2/2Y4 | 230/60 | 159.6 | 111 | 1490 | 1258 | 12.6 | 9.9 | 17.33 | 19.73 | 900*234*266 | 952*330*285 | 2.5-3 |
| RM-1209D-F2/2Y4 | 240/60 | 170.8 | 120.6 | 1444 | 1213 | 12.6 | 10.8 | 17.33 | 19.73 | 1200*234*266 | 1252*330*285 | 2.5-3 |
| RM-1212D-F2/2Y4 | 220/50 | 159 | 103.6 | 1273 | 1054 | 11 | 8.5 | 22.34 | 25.365 | 1200*234*266 | 1252*330*285 | 2.5-3 |
| RM-1212D-F2/2Y4 | 230/50 | 161 | 110 | 1337 | 1137 | 10.9 | 8.5 | 22.34 | 25.365 | 1200*234*266 | 1252*330*285 | 2.5-3 |
| RM-1212D-F2/2Y4 | 240/50 | 180 | 112.4 | 1302 | 1115 | 11.3 | 9.3 | 22.34 | 25.365 | 1200*234*266 | 1252*330*285 | 2.5-3 |
| RM-1212D-F2/2Y4 | 220/60 | 209.6 | 123 | 1373 | 1024 | 11.5 | 9 | 22.34 | 25.365 | 1200*234*266 | 1252*330*285 | 2.5-3 |
| RM-1212D-F2/2Y4 | 230/60 | 212 | 135 | 1477 | 1174 | 12.7 | 9.6 | 22.34 | 25.365 | 1200*234*266 | 1252*330*285 | 2.5-3 |
| RM-1212D-F2/2Y4 | 240/60 | 231 | 143 | 1462 | 1346 | 12.5 | 10 | 22.34 | 25.365 | 1200*234*266 | 1252*330*285 | 2.5-3 |
| RM-1215D-F2/2Y4 | 220/50 | 177.8 | 142 | 1290 | 1147 | 11 | 10.2 | 26.92 | 30.4 | 1500*234*266 | 1552*330*285 | 2.5-3 |
| RM-1215D-F2/2Y4 | 230/50 | 197 | 154.6 | 1305 | 1164 | 11.2 | 9.7 | 26.92 | 30.4 | 1500*234*266 | 1552*330*285 | 2.5-3 |
| RM-1215D-F2/2Y4 | 240/50 | 197 | 159.4 | 1332 | 1216 | 11.5 | 10 | 26.92 | 30.4 | 1500*234*266 | 1552*330*285 | 2.5-3 |
| RM-1215D-F2/2Y4 | 220/60 | 239.6 | 177.4 | 1407 | 1080 | 11 | 8.2 | 26.92 | 30.4 | 1500*234*266 | 1552*330*285 | 2.5-3 |
| RM-1215D-F2/2Y4 | 230/60 | 262 | 194.8 | 1416 | 1101 | 12.3 | 9.4 | 26.92 | 30.4 | 1500*234*266 | 1552*330*285 | 2.5-3 |
| RM-1215D-F2/2Y4 | 240/60 | 269.2 | 206.4 | 1490 | 1243 | 12.5 | 10 | 26.92 | 30.4 | 1500*234*266 | 1552*330*285 | 2.5-3 |





N PTC HEATING CROSS FLOW

- Full Metal Housing with unique design.
- Cross flow.
- Uniform Forced Airflow.



Parameters

Remark : None charged PTC, aluminum blower.
110V/60Hz, 110V/50Hz, 220V/60Hz are all available.

| Model | Voltage/ Frequency (V/Hz) | Input Power motor (W) | Heater (KW) | Air Velocity (m/s) | Air Volume (m³/h)/CFM | Noise (dB) | Net Weight (KG) | Gross Weight (KG) | Unit Size (mm) | Carton Size (mm) | Mounting Height (m) |
|--------------|---------------------------------|--------------------------------|----------------|--------------------------|-----------------------------|---------------|-----------------------|-------------------------|----------------------|------------------------|---------------------------|
| RM-1209N-D/Y | 380/50 | 150 | 3.5 | 7-8 | 1000/588 | ≤45 | 14.5 | 16.0 | 900×220×195 | 960×280×250 | 2.5 |
| RM-1210N-D/Y | 380/50 | 180 | 4.5 | 7-8 | 1100/647 | ≤45 | 16.3 | 17.0 | 1000×220×195 | 1060×280×250 | 2.5 |
| RM-1212N-D/Y | 380/50 | 180 | 4.5 | 7-8 | 1500/822 | ≤47 | 18.7 | 20.7 | 1200×220×195 | 1260×280×250 | 2.5 |
| RM-1215N-D/Y | 380/50 | 220 | 5.5 | 7-8 | 1800/1059 | ≤47 | 23.4 | 25.9 | 1500×220×195 | 1560×280×250 | 2.5 |
| RM-1218N-D/Y | 380/50 | 280 | 8 | 7-8 | 2160/1271 | ≤49 | 27.0 | 30.0 | 1800×220×195 | 1860×280×250 | 2.5 |
| RM-1220N-D/Y | 380/50 | 320 | 10 | 7-8 | 2400/1412 | ≤51 | 28.5 | 32.0 | 2000×220×195 | 2060×280×250 | 2.5 |



WATER HEATING CROSS FLOW

- Front air inlet.
- Energy saving.
- Suitable for all kinds hot waer supply sources.



Parameters

Voltage/Frequency : 220-240V/50Hz, or 110V/60Hz, 110V/50Hz, 220V/60Hz are all available.

| Model | Diameter of Impeller (mm) | Input Power (W) | Air Velocity (m/s) | | Air Volume (m³/h)/CFM | | Noise (dB) | Net Weight (KG) | Gross Weight (KG) | Unit Size (mm) | Carton Size (mm) | Mounting Heigh (m) |
|-----------|---------------------------------|-----------------------|--------------------------|---|-----------------------------|-----------|---------------|-----------------------|-------------------------|----------------------|------------------------|--------------------------|
| | | | H | L | H | L | | | | | | |
| RM-1209-S | 120 | 130 | 11 | 9 | 2605/1532 | 2300/1353 | ≤52 | 20.6 | 23.8 | 900×289×317 | 950×360×372 | 2.3 |
| RM-1212-S | 120 | 135 | 11 | 9 | 2920/1717 | 2790/1641 | ≤54 | 27.5 | 31.4 | 1200×289×317 | 1250×360×372 | 2.3 |
| RM-1215-S | 120 | 140 | 11 | 9 | 3670/2159 | 3467/2039 | ≤57 | 33.5 | 38.0 | 1500×289×317 | 1550×360×372 | 2.3 |

| Model | Water Temperature 100-65°C | | | | | Water Temperature 90-60°C | | | | | Water Temperature 88-55°C | | | | |
|-----------|----------------------------|-----------------|---------------------|------------------------|------------------------|---------------------------|-----------------|---------------------|------------------------|------------------------|---------------------------|-----------------|---------------------|------------------------|------------------------|
| | Water Speed | Water Volume | Water Resistance | Air-Out Temperature | Heat Release Volume | Water Speed | Water Volume | Water Resistance | Air-Out Temperature | Heat Release Volume | Water Speed | Water Volume | Water Resistance | Air-Out Temperature | Heat Release Volume |
| | (m/s) | (kg/h) | (Pa) | (°C) | (KW) | (m/s) | (kg/h) | (Pa) | (°C) | (KW) | (m/s) | (kg/h) | (Pa) | (°C) | (KW) |
| RM-1209-S | 0.48 | 850 | 2015 | 55 | 22 | 0.38 | 695 | 1600 | 51 | 18 | 0.46 | 810 | 1860 | 49 | 15 |
| RM-1212-S | 0.65 | 1160 | 2735 | 55 | 30 | 0.52 | 925 | 2140 | 51 | 23 | 0.62 | 1050 | 2480 | 49 | 19 |
| RM-1215-S | 0.84 | 1450 | 3380 | 55 | 39 | 0.66 | 1150 | 2710 | 51 | 29 | 0.75 | 1350 | 3110 | 49 | 23 |