

# WING

## YOUR INVISIBLE BARRIER

WING is the next generation air curtain created from a passion for a light and modern design representing characteristics of gliders.



### Unique shape

A minimal casing with a streamlined form of a wing that seems to float in the air. The diamond style side panels hide the excellent components in an innovative curtain body to set new standards for air curtains. WING combines the unique design and excellent efficiency to redefine the air curtain image.



## Quality and design

High quality materials, unique shape and rigid construction are the basic assumptions of the designers of the curtain. Simple cleaning of the curtain, double protective coating and efficient and durable EC motor ensure trouble-free operation of the device.

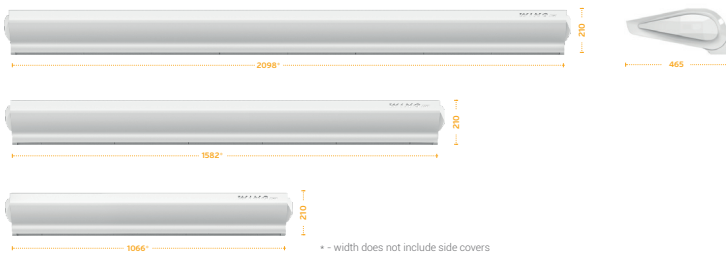
## Energy efficiency

- › highly efficient EC motor
- › maximum unit efficiency even at reduced speed
- › smooth speed regulation
- › optimal fan shape and EC motor let save up to 40% of energy

**WING C**

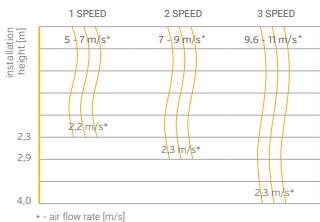
**MAX. AIR RANGE:**  
**4 m**

**EXHAUST FLOW RATE:**  
**1950-4600 m<sup>3</sup>/h**

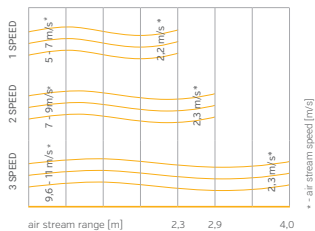


## STREAM RANGE

**Vertical air stream range**  
(maximum installation height)

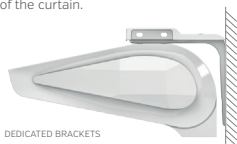


**Horizontal air stream range**  
(for vertical installation)

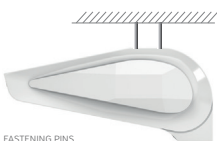


# Installation

Dedicated brackets and fixing points enable immediate installation of the curtain.

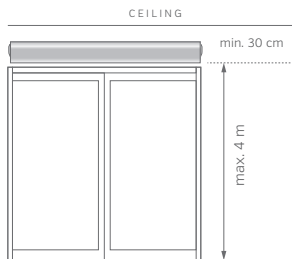


DEDICATED BRACKETS

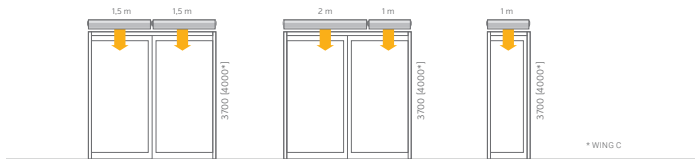


FASTENING PINS

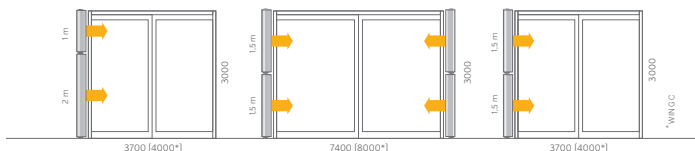
The maximum mounting height is 4m.  
The minimum distance between the air outlet of the curtain and the ceiling is only 30 cm.



## HORIZONTAL INSTALLATION



## VERTICAL INSTALLATION



# Control



**Sterownik HMI WING EC**

VTS article No.	1-4-2801-0155
Motor support	EC
Power supply voltage	~230V/1ph/50Hz
Permissible load	1A for 230VAC 0,02A for 0-10V
Setting range	5...40 °C
Protection rating	IP 20



**Controller WING EC WIFI**

VTS article No.	1-4-2801-0156
Motor support	EC
Power supply voltage	~230V/1ph/50Hz
Permissible load	1A for 230VAC 0,02A for 0-10V
Setting range	5...40 °C
Protection rating	IP 20



**Wall controller WING/VOLCANO**

VTS article No.	1-4-0101-0438
Motor support	AC
Power supply voltage	6(3) V/ph/Hz
Permissible load	1A for 230VAC 0,02A for 0-10V
Setting range	10...30 °C
Protection rating	IP 30



**Potentiometer EC (0-10 V)**

VTS article No.	1-4-0101-0453
Power supply voltage	~230V/1ph/50Hz
Permissible load	0,02 A for 0-10V
Work mode	Manual
Protection rating	IP 30



**Door sensor (reed switch)**

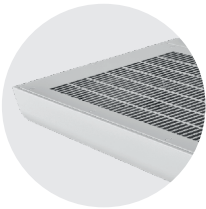
VTS article No.	1-4-0101-0454
Contact configuration	NO
Switching current	500 mA
Switching voltage	max 200 V
Connection	screw

\* cooperation with controller WING EC

ALL EC AIR CURTAINS ARE CHARACTERIZED BY EASE AND SIMPLICITY OF CONNECTION

## ELECTRICITY SAVINGS

Modern design of the EC motor and fan saves energy compared to old generation solutions.



### SIMPLE CLEANING

Thanks to the optimized construction of the covers, cleaning the curtain is comfortable and does not require the disassembly of any part, always ensuring hygienic operation.



### GALVANIZED STEEL CASING

Double coating (galvanization + powder paint) provides long-term protection against corrosion and consistent aesthetic qualities. Casing colour RAL 9016.



### SMART DOOR PROTECTION

Air curtain with advanced WING EC CONTROLLER may perform according to the door opening sensor. Smart Door protection gives you not only permanent temperature comfort but also secure inside environment from dust, pollution, insects and unpleasant scents.

# Technical parameters

PARAMETERS	AMBIENT AIR CURTAIN											
	WING C100				WING C150				WING C200			
	AC		EC		AC		EC		AC		EC	
Colour ○ WHITE (RAL 9016) ● DARK (RAL 7016)	○	●	○	●	○	●	○	●	○	●	○	●
VTS article No.	1-4-2801-02616	1-4-2801-02615	1-4-2801-02615	1-4-2801-02614	1-4-2801-02617	1-4-2801-02616	1-4-2801-02615	1-4-2801-02615	1-4-2801-02617	1-4-2801-02617	1-4-2801-02616	
maximum door width (1 device)	1				1,5				2			
maximum door height (vertical stream range)*	4											
maximum exhaust flow rate	1950				3200				4600			
supply voltage	~230/1/50											
motor pwwer	0,235	0,2	0,375	0,3	0,58	0,45						
rated current	1,2	1,1	1,7	1,3	2,6	1,9						
weight (without water)	17,9	15,3	23,8	20,4	29,3	25,1						
rated current	IP 20											
max. velocity*	11 m/s											
protection rating	RAL 9016 or 7016											

Fan speed	WING C100			WING C150			WING C200		
	I	II	III	I	II	III	I	II	III
Qp [m³/h]	1050	1500	1950	1500	2250	3200	2340	3400	4600
db (A) **	53	59	62	54	62	63	57	61	63

\* air stream range depends on curtain operation speed

\*\* measurement conditions: semi-open space, horizontal installation on the wall, measurement performed 5m away from the device

# Wing key realisations



> Al Murad Mall



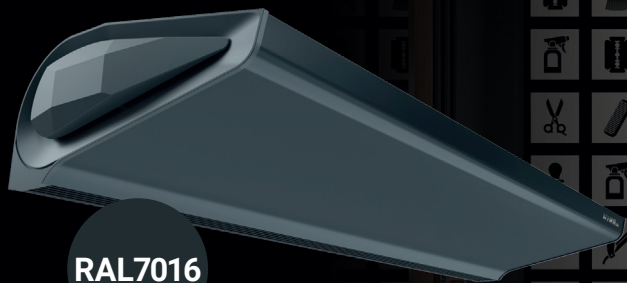
> The Andaz Capital Gate Hotel Abu Dhabi by Hyatt



> DEWA (Dubai Electricity & Water Authority) Office Building, Al Ruwaihah, Dubai

# WING

YOUR INVISIBLE BARRIER



RAL7016

## NO MORE COMPROMISES

The color RAL7016 is currently the most commonly used color in the residential construction industry. Color will no longer stand in the way of the designer's vision. WING DARK RAL7016 will effectively complement roof, doors, windows and gates.

